

User Manual

OUTDOOR DOME NETWORK AI CAMERA SENS-N



If you want to download the data or a Admin Tool, Please scan the QR code or use the website
(www.down-data.com)

Contents

OVERVIEW

3

- 3 Important Safety Precautions
- 4 Caution
- 6 Product Features
- 7 What's Included
- 8 At a Glance

INSTALLATION

9

- 9 Installing
- 11 Adjusting Angle
- 12 Connecting to External Device

WEB VIEWER

15

- 15 What is Web Viewer?
- 20 Live
- 23 Setup

APPENDIX

43


- 43 Troubleshooting (FAQ)
- 44 Product Overview
- 45 Open Source License Report on the Product

Important Safety Precautions

- 1) Read these instructions carefully.
- 2) Keep these instructions separately.
- 3) Heed all warnings.
- 4) Follow all the instructions.
- 5) Do not use this apparatus near water or in damp places.
- 6) Clean only with dry cloth.
- 7) Do not block any ventilation openings. Install in accordance with manufacturer's instructions.
- 8) Do not install near any heat sources such as radiators, heat registers, stoves, or other apparatus that produce heat.
- 9) Be careful not to step on UTP cable or twist it. Pay particular attention if the UTP cable is located near an electrical outlet.
- 10) Only use the attachments/accessories specified by manufacturer.
- 11) Only use the genuine accessories such as cart, stand, tripod, bracket, or table specified by manufacturer or sold with the apparatus.
This apparatus may topple over when being carried in a handcart. Be careful not to be injured.
- 12) Unplug this apparatus during thunderstorms or when it is unused for long periods of time.
- 13) Contact the qualified service engineer if this apparatus needs to be repaired. Repair service is required when the apparatus has been damaged in any way or does not operate normally after damage to its power-supply cord or plug, liquid has been spilled on it, objects have fallen into the apparatus, or the apparatus has been exposed to rain or moisture.

Overview

Caution

Risk Group1	
	WARNING IR emitted from this product. Do not stare at operating lamp
<i>Product tested against IEC62471</i>	

Warning

To reduce the risk of fire or electric shock, do not expose this apparatus to rain or moisture.

To prevent any injury, this apparatus must be securely attached to the wall/ceiling in accordance with the installation instructions.

- 1) Only use the standard PoE (Power over Ethernet) specified in the Specifications. If not using recommended PoE, the apparatus may be damaged by fire, electric shock, or other cause.
- 2) Install the camera stably and securely. Otherwise, the camera may fall down and cause human injury.
- 3) Do not put any electric conductor (such as screw driver, coin, metallic objects, etc.) or vessels containing water on the camera to prevent any human injury due to fire, electric shock or product falling over.
- 4) Install the apparatus in a clean, dry place without moisture, dust, soot, etc. Otherwise, it may cause fire or electric shock.
- 5) If any unusual smell or smoke comes out of the product, stop it. In this case, unplug the power cord immediately and contact your local service center to get appropriate technical support. If you go on using the apparatus without taking any action, fire or electric shock may arise.
- 6) If the apparatus malfunctions, contact your local service center. Do not disassemble or interfere with the apparatus.
- 7) Do not spray water directly onto the apparatus when cleaning. Otherwise, it may cause fire or electric shock.
- 8) Do not install where it is directly exposed to the cool air from an air-conditioner louver. Otherwise, condensation may form on the inside of the camera due to the temperature difference between the inside and the outside of the dome camera.

When installing the apparatus in a place with low temperature such as frozen storage, seal up the plumbing pipes with silicon to prevent cold air from penetrating the housing. Otherwise, humid air infiltrates into the inner housing and condensation may form due to the temperature difference between the inside and the outside of the apparatus.

- 1) Do not drop any object on the apparatus or apply force to it. Do not install where it is subject to vibration or influence by electromagnetic interference.
- 2) Do not install in a place with high temperature (above 50°C), low temperature (below -20°C), or humid air. Otherwise, it may cause fire or electric shock.
- 3) When moving the installed apparatus, unplug the apparatus before moving or reinstalling it.
- 4) Unplug the power (PoE) cable from the camera during thunderstorms. Otherwise, it may cause fire or damage to the apparatus.
- 5) Do not install it near a heat source such as a radiator, or in direct sunlight. It may cause fire.
- 6) Install this apparatus where it is well ventilated.
- 7) Do not install this apparatus in a place where it faces extremely strong light such as direct sunlight. It may damage the image sensor.
- 8) Do not install this apparatus in a place where water leaks or splashes. Do not put any object containing water such as a pot on this apparatus.
- 9) Avoid damage to the main power plug.
- 10) When operating the apparatus outside, condensation may form due to the temperature difference between the inside and the outside of the apparatus. Check if the internal fan works normally before operating it outside.
- 11) Make sure that the LAN Ethernet cable does not extend to the outside of the building.

Before Installing

- The apparatus must be installed by a qualified engineer in accordance with relevant regulations.
- Appropriate protective devices must be fitted to prevent the network camera being damaged by a sudden voltage fluctuation when lightning flashes.
- Comply with every instruction for the safety of the network camera.
- Before cleaning, stop the network camera and unplug its power cable. Use only a soft and dry cloth. Do not use an abrasive.
- You must not repair the apparatus personally. Electric shock may be caused by high voltage electricity when opening/closing the cover. Contact the qualified service engineer if the apparatus needs to be repaired.

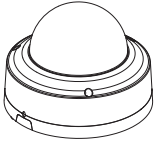
● ● Overview

Product Features

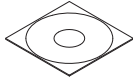
This product is a network AI camera that supports the latest H.264, H.265 and MJPEG compression algorithms, and is suitable for high-performance video security systems.

This camera features IR LEDs for use in low light conditions (0 Lux) and filters that are interchangeable for day and night use, providing sharp and clear image quality at all times, regardless of day or night.

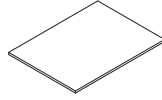
What's Included



Camera



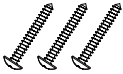
Template Paper



Quick Guide



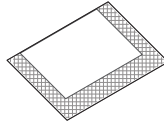
L Wrench



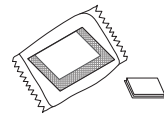
Install Screw (3ea)



Anchor (3ea)



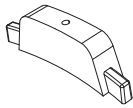
Silica Gel



Extra Silica Gel / Tape



RJ45 Connector

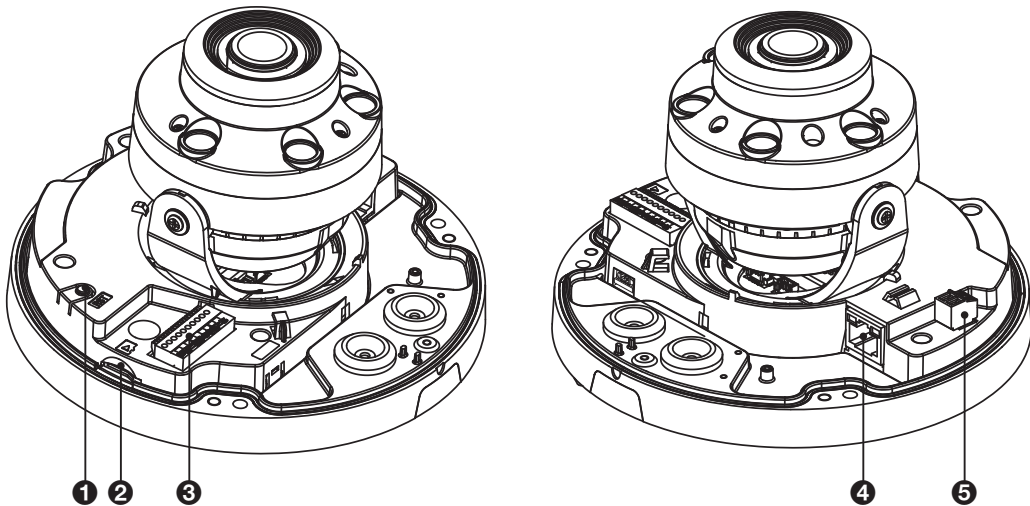


Rubber Case Bottom

! Extra Silica Gel can be attached to the inside of the camera body using the included tape when the camera is installed in a humid place.

Overview

At a Glance



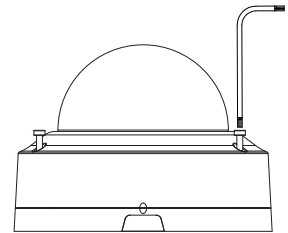
Item	Name	Description
❶	Control Button	Used to change format, restart the camera, and reset to factory default depending on its operating method. - To change analog format : Press and hold for less than 5 seconds. - To restart the camera : Press and hold for more than 5 seconds. - To reset to factory default : Press and hold for more than 10 seconds.
❷	Micro SD Card Slot	Allows a Micro SD card to be inserted.
❸	DC 12V / Audio / Alarm In/Out terminal	- Alarm In/Out terminal : Connect alarm in/out signal. - Audio In terminal : Connect to mic. - Audio Out terminal : Connect to speaker. * Alarm / Audio function depends on the model.
❹	Network	Used to connect the PoE cable between power supply and network.
❺	AC 24 V	Used to connect to a power cable.

Installing

Opening the top cover

To install the camera, open and separate the cover first.

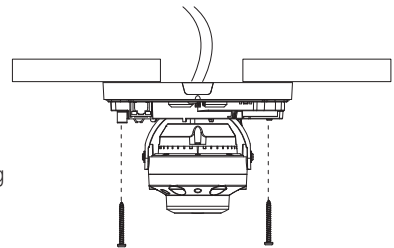
1. Loosen screws by using the L Wrench supplied to remove the top cover.
2. Keep the separated dome cover safely for reassembling after the installation.



Installing on the ceiling

You can install the camera on the ceiling, and then adjust and fix its angle.

1. Attach the supplied template to the place where the camera will be installed, and drill through the installation hole.
 - ✓ It must be installed in a place where it can bear the camera's weight.
2. Fix the camera main body onto the ceiling using the screws provided.
 - ✓ It is recommended to inject silicon into the gap between the camera and the ceiling for secure waterproofing.

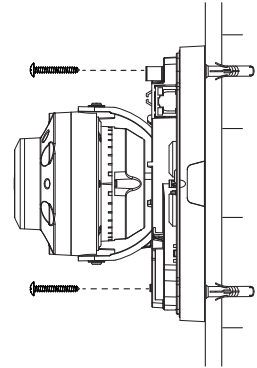


● ● Installation

■ Installing on a surface

You can install the camera on a wall, and then adjust and fix its angle.

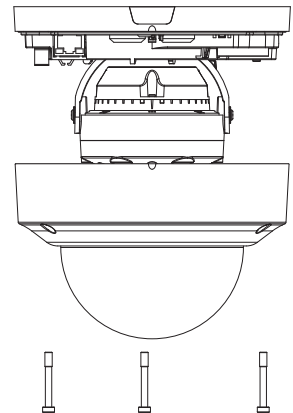
1. Attach the supplied template to the place where the camera will be installed, and drill through the installation hole.
 - ✓ It must be installed in a place where it can bear the camera's weight.
2. Fix the camera main body onto the wall using the screws provided.
 - ✓ It is recommended to inject silicon into the gap between the camera and the wall for secure waterproofing.
 - ! If necessary, attach extra silica gel packets to the inside of the product.



■ Reassembling the Dome Cover

To protect the lens, the cover must be reassembled once installation is finished.

1. Adjust direction of the camera lens to the desired monitoring framing after fixing the camera onto the ceiling or wall.
2. Reassemble the Dome Cover and fasten the screws.

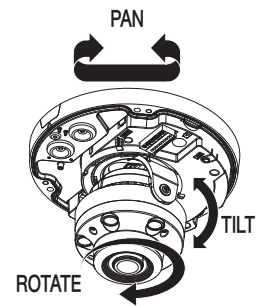


Adjusting Angle

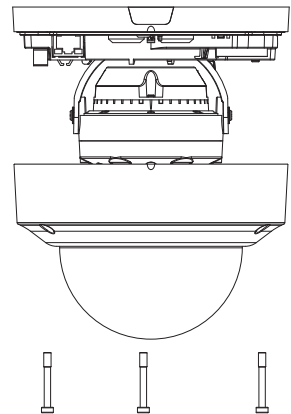
Adjusting angle

After installing your camera on a ceiling or wall, you can adjust the camera angle to allow the camera lens to capture the target site.

1. Install the camera on a ceiling or wall wherever you want.
2. Adjust the camera angle by moving left, right, up or down to focus on your target site.



3. Reassemble the Dome Cover and fasten the screws.



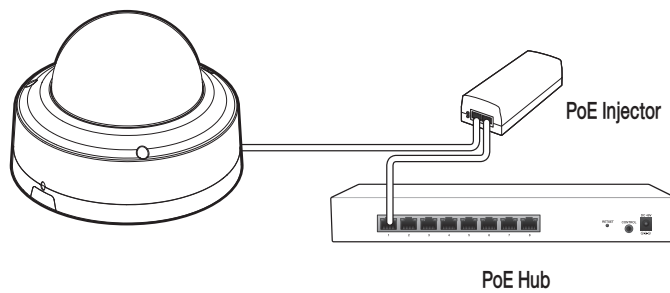
● ● Installation

Connecting to External Device

Connecting with power supply

Connect the PoE (Power Over Ethernet) cable between the power supply and the network port.

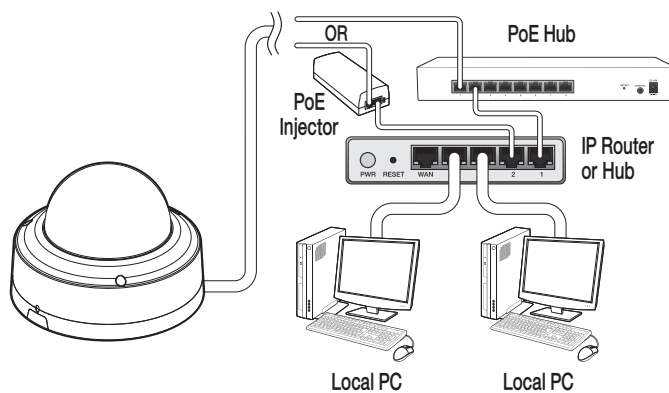
i If your network camera is installed as standalone setup, the power should be supplied by PoE Hub.



Connecting to the network

To connect with a PC in local network

If you connect the network camera with a PC in the same network, you can perform monitoring and setting process by using the PC's Web Viewer.

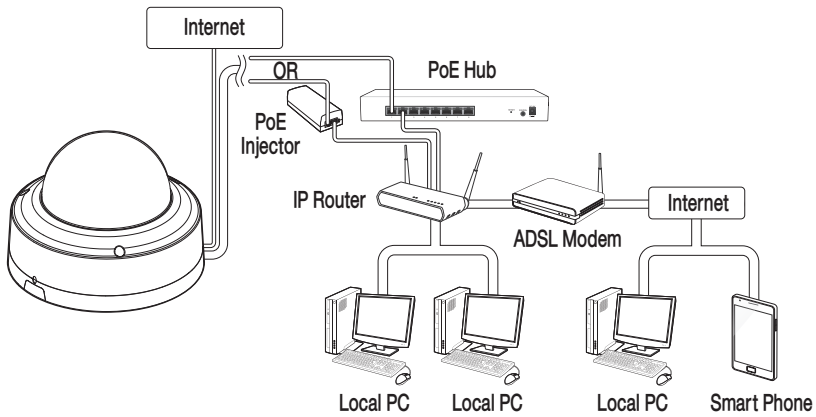


1. Connect the network port on the back panel with a router or hub.
2. Connect a local PC with a router or hub.
3. Enter the address in "**http://IP address:web service port**" format in address window of the web browser or dedicated software program at local PC.
 - ✓ Ex : `http://192.168.0.23:80` web service port is set as 80 by factory default. You can modify the port number in Network Setup screen.
4. Enter your ID and password to log in. You can watch the monitoring screen after login.
 - ! You must register your login password when accessing for the first time.
To change your password, refer to "**How to connect to the camera**". (page 15)

● ● Installation

To connect with a PC in remote network

You can access the network camera from your PC through the internet.



1. Connect router's network port directly with static IP LAN cable or with the ADSL modem.
2. If using a router, you should configure the port forwarding settings.
 - ✓ You can get relevant support from your router manufacturer or qualified installation company for how to configure the port forwarding of your router.
 - ✓ When connecting to a network camera from a PC through the Internet, enter a URL in the format of: "http://IP address:web service port". For more information, refer to "**Setup > Network**". (Page 31)

What is Web Viewer?

Before connecting

When using internet access, set the port number as 554 and 80 in your router port forwarding settings. For more information about port forwarding settings, refer to the user manual of your router.

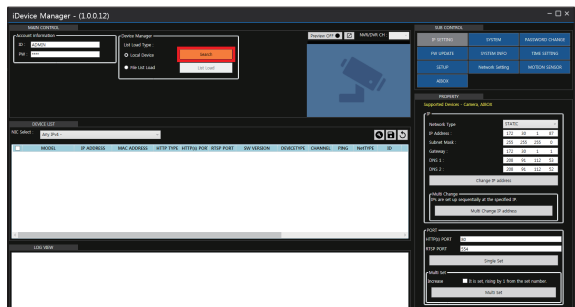
Minimum PC Specifications for Web Viewer

CPU	P4 3.0 or higher
RAM	512MB or higher
VGA	Geforce MX 400, Radeon 7500 or higher
VGA memory	64MB
Monitor	1280X1024
Browser	Internet Explorer, Firefox, Chrome, Smart Phone(iOS, Android)
IE version	IE8.0 or higher
Network	100Mbps
DIRECT X	V 7.0 or higher

How to connect to the camera

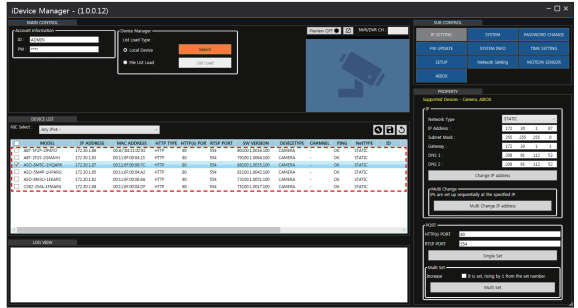
Since the network settings of your network camera are not configured by factory default, you cannot access to WebRA. To configure your network, run the “iDevice Manager” to check the IP and access to your camera.

- Press <Search> button to search for the network camera linked to your network.



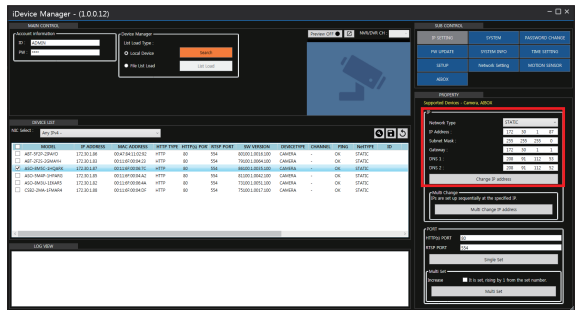
Web Viewer

- The search results are displayed if finished. You can distinguish your network camera(s) by checking its model information. Click your desired apparatus whose network settings you want to configure in the list.



- Select "DHCP" or "STATIC" from the IP section's <Network Type> that is on the right side of the screen. If selecting "STATIC", enter the values for IP Address, Subnet Mask, Gateway, and DNS information, and then press <Change IP address>.

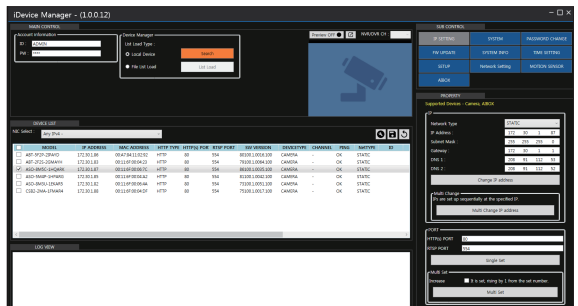
✓ To use DHCP (Dynamic Host Configuration Protocol), your network camera must be connected to the corresponding device such as DHCP server (router). When connecting your PC with a network camera directly on a one-to-one basis, you cannot use DHCP and watch the video from the network camera which has been remotely connected via internet.



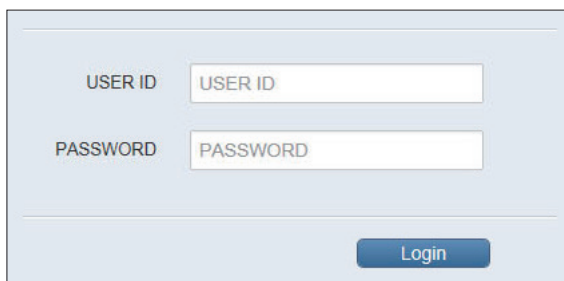
- Select the camera you want, then press <Multi Change IP address> button to change the camera's IP address. The IP address will be changed automatically in a row, with the existing IP address as a standard.

- The list is automatically updated in a moment. Check if all the values look correct and finish the network environment settings.

✓ Press <Preview ON> button at the upper side of the screen to preview the live screen of the selected camera.

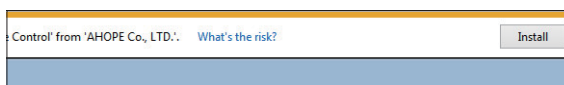


5. Security page (Internet Explorer) is displayed.
 - ✓ Ex) The `http://192.168.0.4:80` changes into `http://192.168.0.4:80`.
6. Click **<Continue to this website (not recommended)>**.
7. Enter your ID and password in the ID input window.
 - ✓ Default User ID : ADMIN
Password : 1234

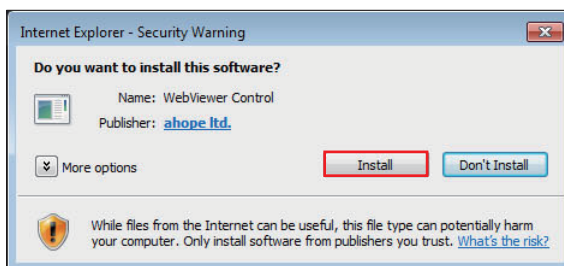


A light blue login form with two input fields. The first field is labeled 'USER ID' and contains the text 'USER ID'. The second field is labeled 'PASSWORD' and contains the text 'PASSWORD'. Below the fields is a blue button labeled 'Login'.

8. You should run the activities after installing corresponding Active-X.



9. If Active-X failed to install, check the ActiveX option in IE Security menu.
If the Active-X installation window does not appear in the top right area for a long time (longer than 1 minute), change the **"Internet Options"** settings. (page 18)

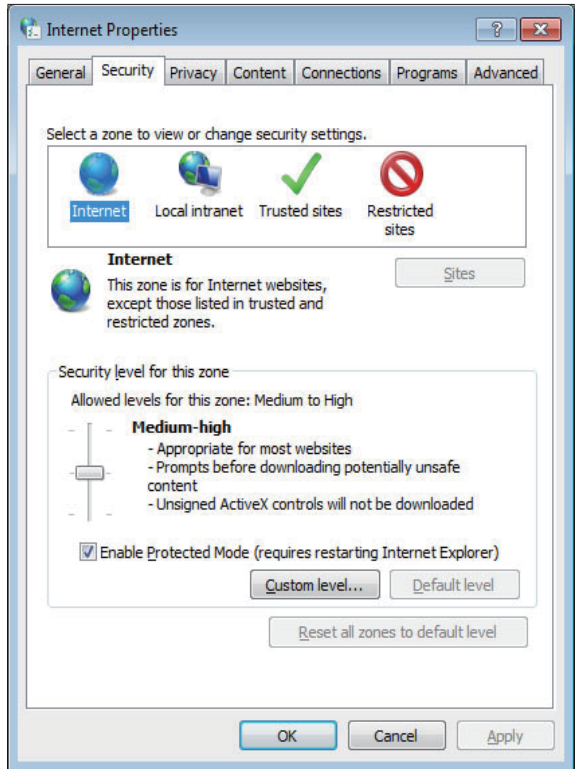


• Web Viewer

10. "Control Panel > Internet Options > Security" menu, press **[Custom level...]** button.

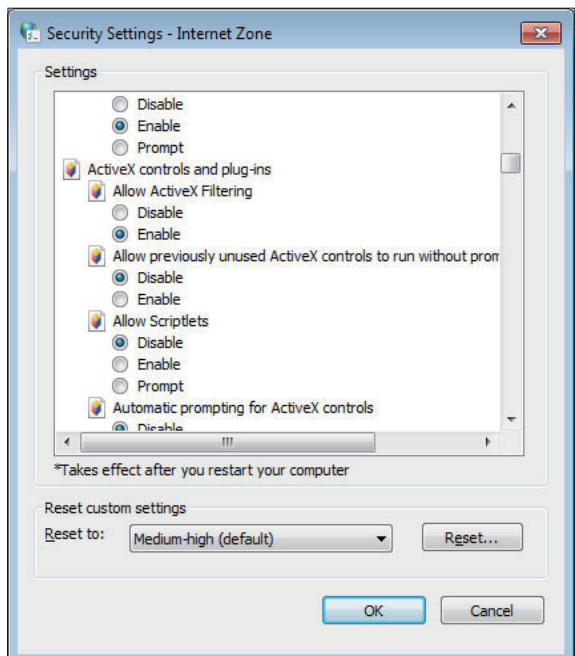
11. Select all the ActiveX-related options as available.

✓ Ex : Download signed ActiveX controls, Download unsigned ActiveX controls...

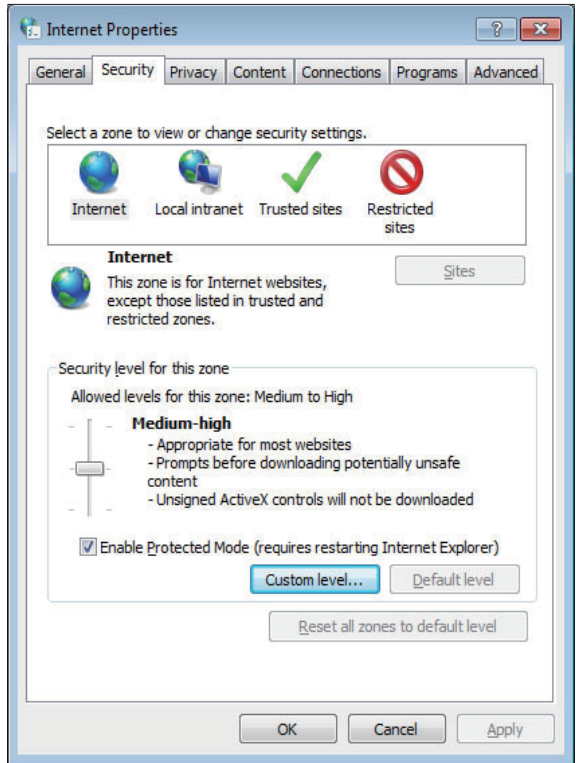


12. Finish the Security settings, and then press **[OK]** button.

✓ Check "Do not include local path when uploading files to the server".



13. Click [OK] button to restart the IE.




Web Viewer

Live


Learning the Live screen



Item	Name	Description
1	MFZ setup	Move to the MFZ screen. Manually sets the zoom/focus of the lens.
2	Stream Change	If selecting Dual Stream, the streams are shifted in the order of the 1st (the first stream) ↔ 2nd (the second stream).
3	Full Screen	Displays the image in full screen.
4	Multi Window	Plays the video in two screens.
5	OSD	Display or hide the OSD menu on the screen.
6	Freeze	Stops transmitting the image manually.
7	Mute	Used to mute the sound.
8	Duplex Audio	Delivers the sound to the camera by using a microphone connected to a PC.
9	Snapshot	Saves current image as .jpg image file.

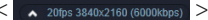
Item	Name	Description
10	Print	Prints current screen.
11	Panic Record	Start the panic recording.
12	Alarm	Turns on if an event occurs. It does not turn on if no reaction to the event is yet defined. Click this to check the information of the event that occurred.
13	Stream Status	Click to display the network information.
14	Storage Information	Displays the storage information of the Micro SD Card.
15	Date/Time	Display the current time and date.
16	Event Status/ Information	Click to see the event status, network information, streaming session, storage status, and system status.
17		A motion is detected by the connected camera.

MFZ setup

Click the menu button at the left bottom of your live screen to go to the MFZ setting screen.
Move the Bar <  > with your mouse to adjust the zoom/focus of your lens.




Stream Change

Since this camera supports the 'dual streaming' transmission, you can shift between the 1st stream and the 2nd stream by clicking the <  >.


- ✓ You can shift between the streams only if the 2nd stream is set in "**Setup > Camera > Codec setup**". (page 23)

Full Screen

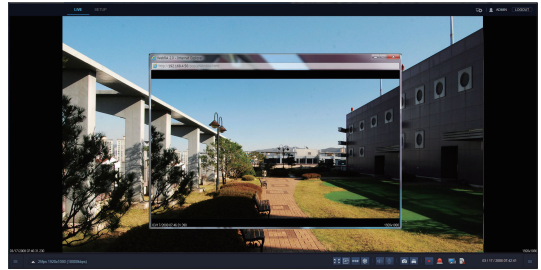
1. Click <  >.
2. Locate your mouse pointer over an image and then double-click to display in full screen.
3. If you want to go back, double-click your mouse button over the image.
You can go back by pressing the **[Esc]** key on your keyboard or right-clicking.

Web Viewer

Multi Window

Click the  to display video in a small popup window instead of the default screen.

- ✓ In the small popup window, menu selection is not available.



Snapshot

Click  to save current image as .jpg file.

Event Status/Information

You can set Alarm In, Alarm Out, Motion, etc. in Event Status. The Information displays general information about your camera such as Network Information, Streaming Session, Storage Status, System Status, etc.



Setup

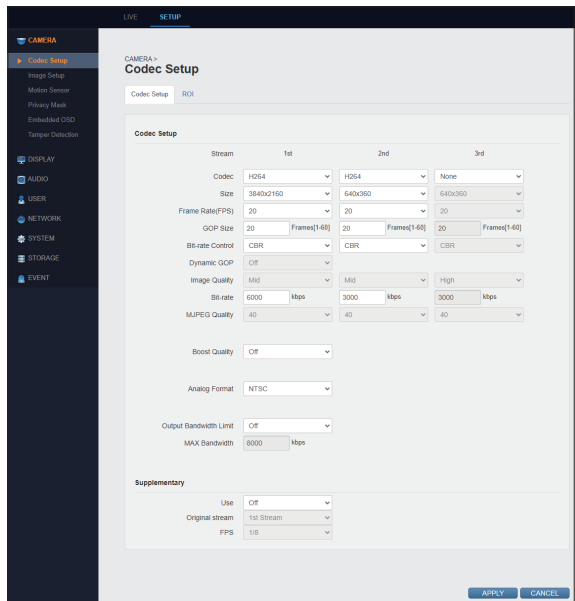
CAMERA

Codec Setup

1. Codec Setup

You can set various video functions for the camera depending on the field situation. When finishing the setup process, click <APPLY> to apply.

- Codec Setup
- › Codec : This network camera can transmit videos in different resolutions and qualities simultaneously using different CODECs.
 - H264 : Video compression standard to transmit high quality video stream efficiently. H.264 is available in various networks and systems and allows the bit rate to be controlled according to adjusted bandwidth usage.
 - H265 : It can alternatively be used to provide substantially improved video quality at the same bit rate of H.264.
 - MJPEG : You can edit each frame freely even if it is already compressed and get high quality images when restoring. Though Motion JPEG uses a considerable amount of bandwidth, it provides excellent quality for each image.
- › Size : You can change each network transmission resolution for your camera.
- › Frame Rate(FPS) : You can set the frame (rate) for camera video.
 - ✓ If network speed is fast enough, you can set Frame Rate as 30 fps to have more natural video.
- › GOP Size : The faster the subject in video moves, the smaller the GOP Size should be. However, the slower the subject in video moves, the bigger the GOP Size should be.
- › Bit-rate Control : You can select <CBR> or <VBR> or <VBR+>.
 - CBR (Constant Bit Rate): Used for encoding H.264/H265 video into a fixed Bit Rate.
 - VBR (Variable Bit Rate): Encoding Bit Rate will be varied from video to video. Normally, when the video is more dynamic, the Bit Rate will also go up.
 - VBR+: Has a higher compression rate than VBR. The effectiveness will be maximized if the video is less dynamic.
- › Dynamic GOP : Using <VBR+>, you can set whether to use a dynamic GOP.
- › Image Quality : Using <VBR> or <VBR+>, you can set the image quality.
- › Bit-rate : You can set up the average size of the encoding video.
 - ✓ Enter a value within a range of 512 Kbps ~ 15000 Kbps.
- › Boost Quality : Works if Motion (Motion Detection) area has been set in network camera event and <ON> has been selected. When an event is triggered, camera's instant FPS/Bitrate/GOP value is changed into the specified Boost FPS/Bitrate/GOP value.
- › Analog Format : Select <NTSC> or <PAL> and press <APPLY> button.
- › Output Bandwidth Limit : You can select whether to limit bandwidth or not.
- › MAX Bandwidth : Specifies the peak bandwidth. You can enter your desired value if selecting <ON> for Bandwidth Limit.
 - ✓ Enter a value within a range of 1000 kbps~30000 kbps.



Web Viewer

- **Supplementary Use**

- ✓ You can set up the Frame Per Second reception rate differently for the 1st/2nd video streaming.
- Use : Sets whether to use Supplementary.
- Original stream : Sets the default video stream.
- FPS : You can set the frame rate of the camera image.

2. ROI Setup

You can encode the image such that the image quality of the ROI region (detected object) is improved and the image quality of the non-ROI region is decreased.

When finishing the setup process, click **<APPLY>** to apply.

- ROI Mode : Sets ROI operation mode.
 - Manual : Sets the ROI region manually.
- Background Image Quality : Sets the quality of the background image.
- ROI : Sets ROI and non-ROI regions by clicking and dragging to define an area on the screen.
 - Area All : Sets the whole area shown on the screen as ROI/non-ROI.
 - Area 1 ~ Area 8 : Up to 8 areas can be set.

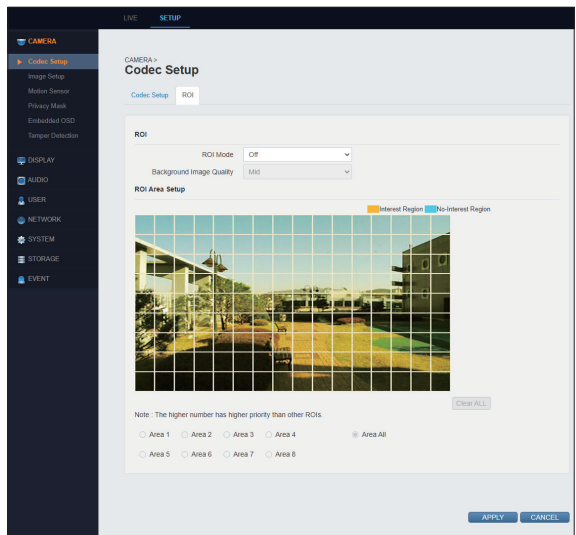
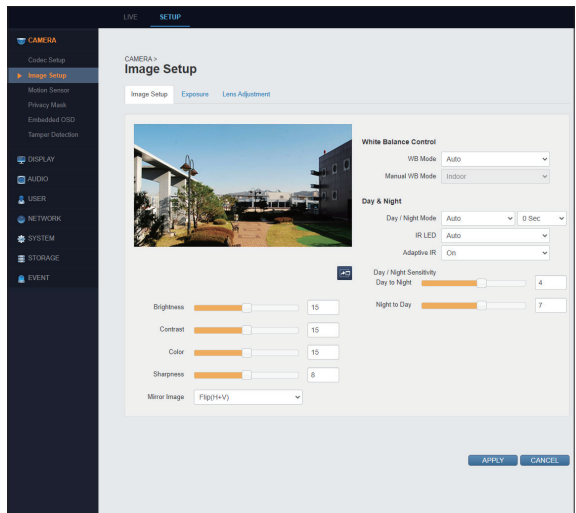


Image Setup

1. Image Setup

You can set the following items to make the installed camera have the best image optimized for its environment. When finishing the setup process, click **<APPLY>** to apply.

- **White Balance Control**
 - WB Mode : Automatically correct the color balance of your camera to make a natural-looking screen.
 - Manual : User adjusts 'White Balance' manually.
 - Auto : Camera adjusts 'White Balance' automatically.
 - Auto Wide : Camera adjusts 'Wide White Balance' automatically.
- ✓ Except for some special cases, **<Auto>** is generally recommended.



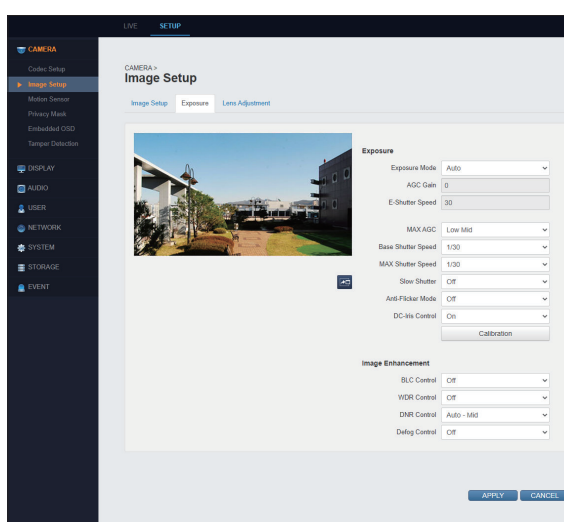
- Day & Night
 - › Day / Night Mode : Measures the illumination of camera to shift into color or black/white video and change its day/night filter depending on illumination condition.
 - Day : Displays video in color mode regardless of illumination and fixes its filter to day.
 - Night : Displays video in black/white mode regardless of illumination and fixes its filter to night.
 - Auto : Your camera measures the illumination and changes its settings automatically.
 - Schedule : Automatically switches between day and night mode according to the schedule.
 - ✓ <Auto>, <0 sec> is recommended in usual environment.
 - › IR LED : When it is set to <AUTO>, the IR LED will be turned on during the nighttime. If in the daytime, the LED will be turned off automatically.
 - › Adaptive IR : When it is set to <On>, the brightness of the IR will be altered due to the brightness of the environment.
 - › Day / Night Sensitivity : Adjust the sensitivity depending on the illuminance of day and night.
 - Day to Night : Sets the Sensitivity for Day to Night switching within the range of 0 through 7.
 - Night to Day : Sets the Sensitivity for Night to Day switching within the range of 3 through 10.
 - ✓ The value of Day to Night switching must be smaller than that of Night to Day by 3 or more steps.
- Image Property Control

You can set the Sharpness, Brightness, Contrast, and Color for image.

 - ✓ The bigger the number is, the bigger the camera setting value is. Except for some special cases, default values are recommended.
 - › Mirror Image : You can flip captured image horizontally, vertically, or in all directions if required.
 - Horizontal : Flips the captured image horizontally (◀▶).
 - Vertical : Flips the captured image vertically (▲▼).
 - Flip(H+V) : Flips the captured image horizontally (◀▶) + vertically (▲▼).

2. EXPOSURE

- Exposure
 - › Exposure Mode : Select the exposure mode. After setting it up, click <Calibration> to apply the changes.
 - Manual : Controls camera's exposure manually. To compensate for small amount of light, adjust the "AGC Gain, E-Shutter Speed" to the values entered by user.
 - Auto : The camera controls every exposure. If selecting <Auto>, you cannot use some secondary menus (AGC Gain, E-Shutter Speed).
 - ✓ For your convenience, <Auto> is recommended for Exposure Mode.
 - ✓ When in Auto (Motion Priority) mode, camera has less motion blur than in Auto mode at normal brightness.



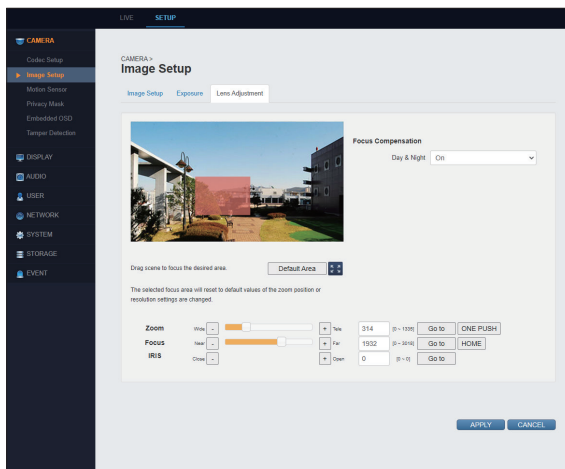
Web Viewer

- MAX AGC : AGC is the abbreviation for Automatic Gain Control. When too strong level of signal is input, the AGC adjusts the Gain (film sensitivity) to prevent the signal from being saturated. When too weak level of signal is input, the AGC adjusts the Gain to keep a certain level of signal.
 - Maximum AGC sets the peak Gain which is applied to low light level environment. It is classified into LOW/LOW MID/HIGH MID/HIGH/MAX. Higher the value the screen looks brighter, but may increase noise.
 - Base Shutter Speed : Sets the default shutter speed that is applied when the exposure mode is set to <Auto> or <Auto (Motion Priority)>. If you set the default shutter speed to a faster value, you can capture moving objects without a blur.
- MAX Shutter Speed : Set the maximum shutter speed.
- Slow Shutter : Specifies whether to use digital sense-up mode or not.
 - Off : Disables DSS (Slow Shutter). You can use DSS in X2, X4, or X8 mode.
- ✔ If you use the sense-up mode in a dark place with very low light level, you can watch a much brighter video since the brightness still remains at the specified level. However, the video FPS becomes slower in this case.
- Anti-Flicker Mode : Adjusts the exposure settings when using the camera in a place where fluorescent light is turned on. You can use this mode when screen flickers. '60 Hz' is generally specified as its value in Korea.
- DC-Iris Control : Sets whether to use the camera's aperture control function. Adjust the camera aperture according to the ambient light to maintain the proper brightness.
- Image Enhancement
 - BLC Control : Use this function to compensate scenes which are too bright under a backlight condition such as framing a bright window or open door from the inside. In such a case, using the function allows the camera to produce better images of the dark objects displayed on a monitor. BLC (Backlight Compensation) is classified into Off/Adaptive/Zone.
 - Off : Disables the BLC (Backlight Compensation) function.
 - Adaptive : Applies BLC without considering the location of bright area.
 - Zone : If you specify a bright area as Zone, the BLC is applied to the Zone. If you don't specify properly, the screen may look darker.
 - ✔ BLC function is useful in most cases when framing a window or door with backlight. For outdoor camera installation, it is recommended to set BLC (Backlight Compensation) function to <Off>.
 - WDR Control : Wide Dynamic Range (WDR) is a feature that allows for different objects at different exposures to be viewed in the same scene (ex; one object in a bright area and one in a dark area).
 - DNR Control : use temporal and spatial noise reduction to improve image quality and reduce video noise. This can be set to Off, Auto(LOW/MID/HIGH), or to Manual(LOW/MID/HIGH) levels.
 - Defog Control : Adjusts the image of foggy or very cloudy weather. Set this if the image is foggy.
 - ✔ Note that resulting image can look dark if applied to an image taken in light mist while the manual fog level is set too high.

3. Lens Adjustment

You can select where to set the zoom or focus of your lens by dragging on the image with your mouse.

- **Zoom** : Click the (-) or (+) button to adjust the zoom.
- **Focus** : Click the (-) or (+) button to adjust the focus.
- **IRIS** : Click the (-) or (+) button to adjust the iris.
- **Go to** : Enter your desired number to set the zoom/focus as designated.
- **ONE PUSH** : Drag your mouse on the video to set the location for auto focus. Click **[ONE PUSH]** button to fit the focus automatically.
- **HOME** : Click **[HOME]** button to move to the default flange back position.
- **Default Area** : Reset the focus area to the default area (the entire image area).
- **Focus Compensation** : Select **<On>** to switch between Day and Night mode and adjust the focus automatically.

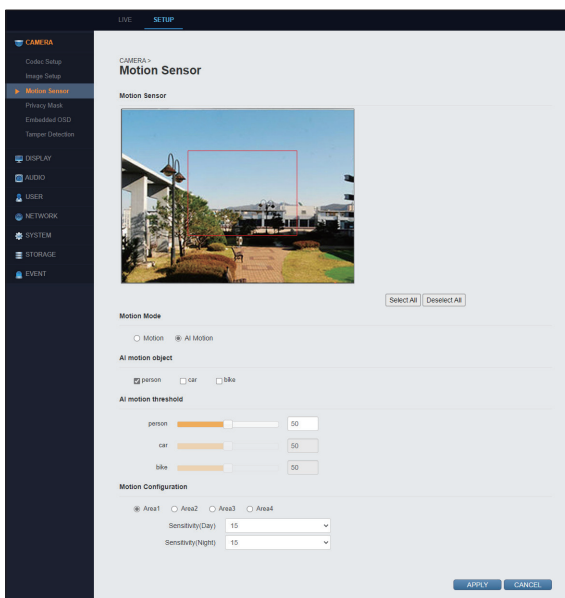


Motion Sensor

When motion is detected in specified area, you can get E-mail notification or the image transferred via FTP or e-mail.

When completed, click **<APPLY>** to apply.

- **Motion**: Sets the motion detection function.
 - **AI motion**: Sets the AI motion detection function.
 - **AI motion object**: You can set the object to be recognized by AI motion detection function. Select a desired object among persons, cars and bikes.
 - **AI motion threshold**: You can set the reference value for each object to be recognized by AI motion detection function.
 - **Select Area** : You can select up to 4 different motion areas.
 - **Sensitivity(Day)** : You can set the daytime sensitivity for the selected area within the range of 1 through 30.
 - **Sensitivity(Night)** : You can set the nighttime sensitivity for the selected area within the range of 1 through 30.
 - **Select All** : Selects all the areas.
 - **Deselect All** : Deselects all the areas.
- ✓ If you specified multiple "Motion" areas, some of camera functions may be slow down.

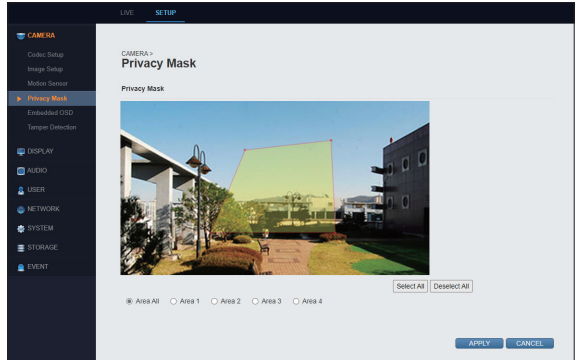


Web Viewer

Privacy Mask

You can directly specify a certain area of the camera video to be blocked to protect privacy. When completed, click **<APPLY>** to apply.

- › Select Area : Allows to select up to 4 different areas to be blocked to protect privacy.
- › COLOR : Allows to specify blocking color for each area.
- › Select All : Set all the areas as the surveillance and protection area.
- › Deselect All : Deselects all the areas.



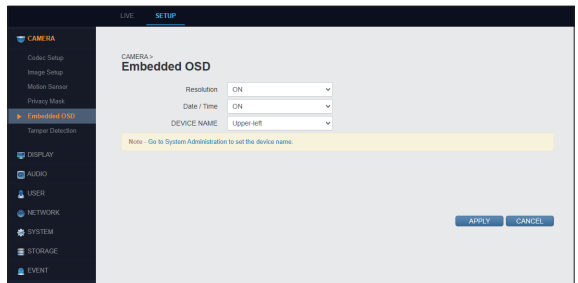
Embedded OSD

You can choose to display the resolution, date/time, and device name on the live screen. When you select a function, information is displayed on the recorded video.

- ✓ The Embedded OSD is to display text in the window of the live screen. It is different from the OSD displayed on the recorded video.

When completed, click **<APPLY>** to apply.

- › Resolution : Specifies whether to display camera resolution on screen or not.
- › Date / Time : Specifies whether to display date/time on screen or not.
- › DEVICE NAME: Specify whether to display the device name on the screen. You can set the device name in "SYSTEM > System Management". (Page 35)

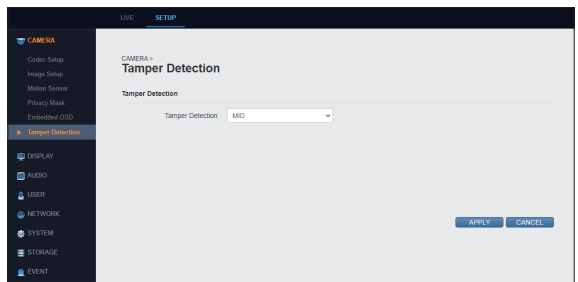


Tamper Detection

You can set the camera to detect the external factors that will prevent the user from seeing the video that they want, such as change of the installed camera's direction, blocking of the camera's lenses, or blocking/distortion of the video due to paint or spray.

When completed, click **<APPLY>** to apply.

- › Tamper Detection : Sets the level of neutralization of the camera that can be detected.



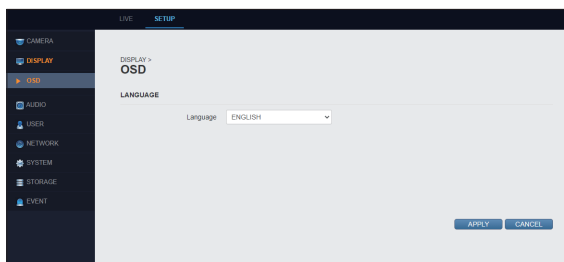
DISPLAY

OSD

Language to be displayed by the product. The interface will be marked in a selected default language. Users can choose the language they want.

Changing this language setting will also change the setting in "Session Configuration > Language" in the same way.

- › LANGUAGE : Select the language to be displayed on the screen.

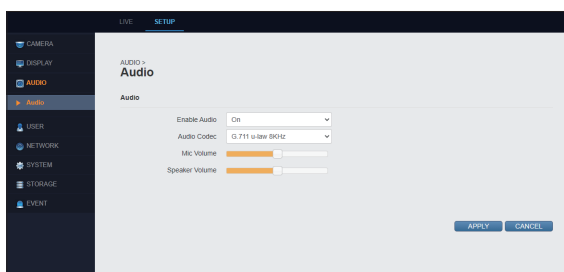


Audio

You can set whether to use audio or not and specify the volumes for microphone and speaker.

When completed, click <APPLY> to apply.

- › Enable Audio : Selects whether to use audio or not.
- › Audio Codec : Transmits audio sounds with different qualities.
- › Mic Volume : Sets the microphone volume.
- › Speaker Volume : Sets the speaker volume.



Web Viewer

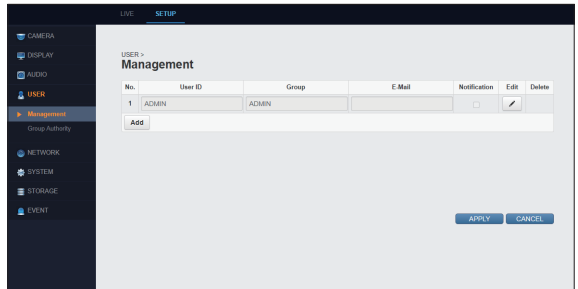
USER

Management

You can add or delete a user account and change password.

When completed, click <APPLY> to apply.

- Add/Edit/Delete : Add, edit, or delete a user account.
 - ✓ You can register up to 8 accounts including 'ADMIN'.
 - User ID : You can log in to network camera with 'User ID'.
 - Password : You can log in to network camera with password.
 - Group : Select the permission of user account.
 - Admin : Allowed to change all the camera settings.
 - Manager : Permission to the Live function and other selected settings are allowed to a user by default (you can modify the default permission settings).
 - User : Permission to the Live function is allowed to a user by default (you can modify the default permission settings).
- ❗ The permission of Manager or User may be different depending on the Group Authority settings.
- E-Mail : Enter the target e-mail address which will receive the event notification.
 - Notification : Select whether to use the E-mail Notification function or not.
- ✓ You cannot delete or change 'ADMIN' which is main administrator account ID. (allowed to change password)
You cannot add new account with the same <User ID> and <Password>.

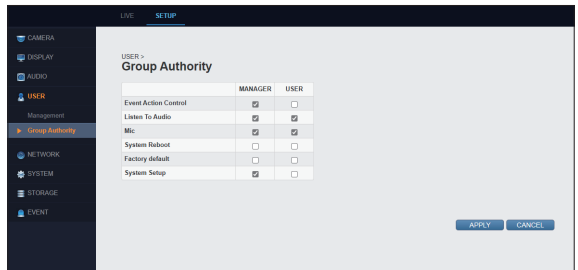


Group Authority

You can grant different user groups different permissions to a specific menu.

When completed, click <APPLY> to apply.

- Event Action Control : Set the permissions to output the alarm or control the buzzer if an event such as alarm occurs.
- Listen To Audio : Set the permission to listen to the audio.
- Mic : Set the permission to speak through the microphone.
- System Reboot : Set the permission to reboot the camera.
- Factory Default : Set the permission to perform the Factory Default.
- System Setup : Set the permissions for the System Setup menu.

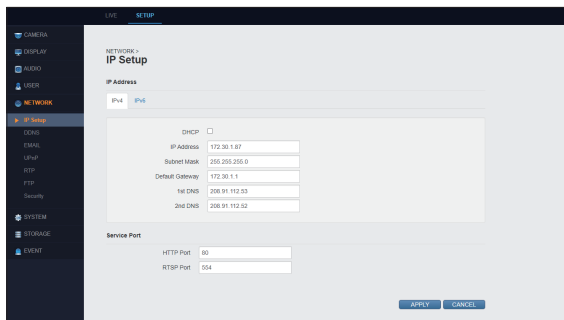


NETWORK

IP Setup

You can modify and check the camera network settings. Set each items. When completed, click <APPLY> to apply.

- IP Address
 - › DHCP : If router or internet sharer in (local) network where your camera is installed, you can use "DHCP" function to apply the network settings including camera IP address automatically.
 - IP Address : Enter the camera IP address.
 - Subnet Mask : Enter the subnet mask value of your camera.
 - Default Gateway : Enter the gateway value of your camera.
 - 1st DNS : Enter the 1st domain name of your camera.
 - 2nd DNS : Enter the 2nd domain name of your camera.



- Service Port

You can enter the port by clicking the input field of each port.

- › HTTP Port : Allows to change the port number of web service.
- › RTSP Port : Supports AV streaming server to set port number.

✓ RTSP : A protocol to send/receive sound or movie in real time

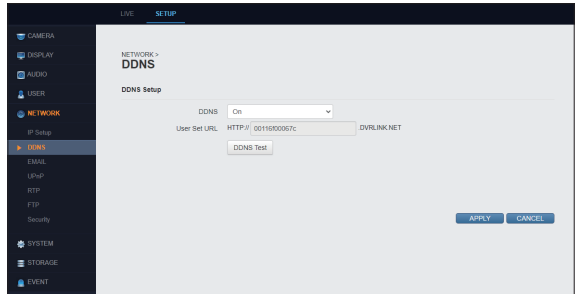
! If you change the settings without basic knowledge on network, you may not be able to access the camera. If you are forced to change the settings, contact the implementation service provider or network engineer.

Web Viewer

DDNS

You can configure the DDNS settings.
When completed, click <APPLY> to apply.

- › DDNS : Select whether to use DDNS service or not.
- › User Set URL: Can check the URL address that the user will use as the DDNS domain.
- › DDNS Test : Can test the DDNS service for the verified domain address.



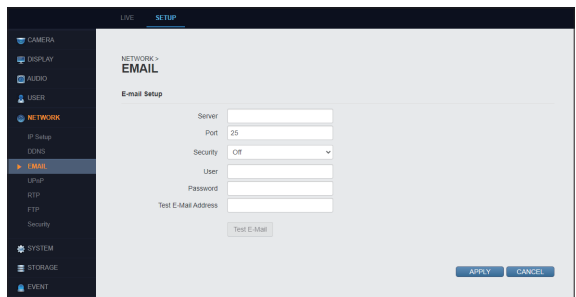
E-MAIL

When an even occurs at camera, you can send a message to specified e-mail address by using SMTP.
To send message, enter mail server or user account information.

When completed, click <APPLY> to apply.

- › Server : Enter the sending mail server (smtp).
- › Port : Enter the port of sending mail server.
- › Security : Select whether to use the security function of mail server or not.
- › User : Enter the user name of sending mail server.
- › Password : Enter the password of sending mail server.
- › Test E-Mail Address : Enter the recipient's e-mail address and use the <Test E-Mail> button to test e-mail.

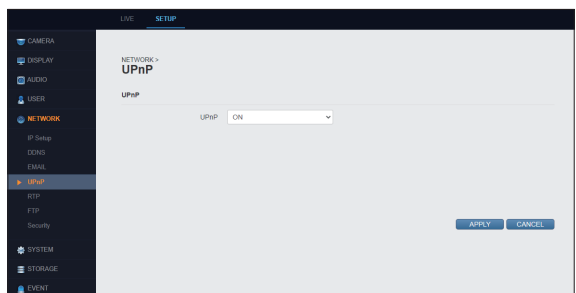
- ✓ E-mail (SMTP) setup process is different depending on user's e-mail address (portal company). For more information, search for "SMTP setup" in the internet or contact your network administrator.



UPnP

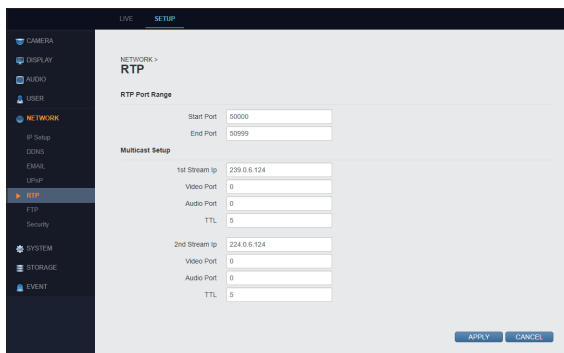
You can set whether to use the UPnP function or not.
When completed, click <APPLY> to apply.

- › UPnP : Select whether to use UPnP function or not.
- ✓ A router or internet sharer with UPnP function should be connected with the network where the camera has been installed.
- ✓ To use the UPnP function of camera, the internet sharer should support the UPnP function.
Though the UPnP function is generally supported by internet sharer, some internet sharers may not support.



RTP

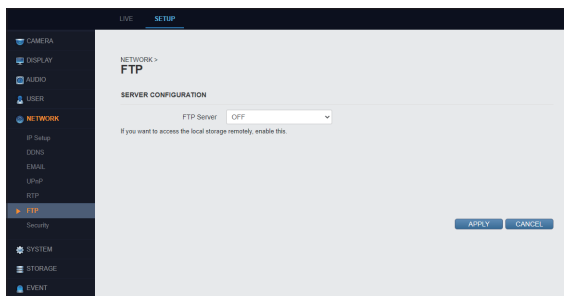
- RTP Port Range
 - › Start Port : Set the range of start port.
 - › End Port : Set the range of Last port.
- ✓ **RTP (Real-time Transport Protocol)** is a protocol designed to transport real-time data such as sound, video, etc. under unicast or multicast condition.
- Multicast Setup
 - › 1st Stream IP / Video Port / Audio Port / TTL : Specifies the IP address of main stream, video port, audio port and TTL.
 - › 2nd Stream IP / Video Port / Audio Port / TTL : Specifies the IP address of secondary stream, video port, audio port and TTL.
- ✓ **Multicast** is a method to send the same data to multiple specific receivers simultaneously in a network. This method cuts down on network waste, gets rid of unnecessary burden, and is generally used in unrestricted network (intranet).



FTP

You can configure the FTP settings so that you can transfer the images saved in camera's storage media to your PC if an event or alarm occurs. When completed, click <**APPLY**> to apply.

- **SERVER CONFIGURATION**
 - › FTP Server : Sets whether to use an FTP server. The default is set to <**Off**>.
- ✓ This function is available only if SD card is mounted.



Web Viewer

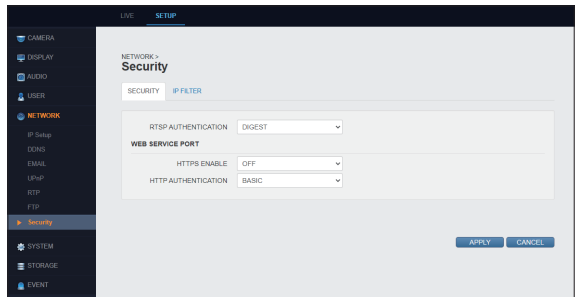
Security

When connecting to a web service, you can choose whether to use HTTPS communication protocol or not and can register the IP address you wish to filter.

1. SECURITY

If using a web service, choose whether to use RTSP authentication and HTTPS or not in order to enhance the security.

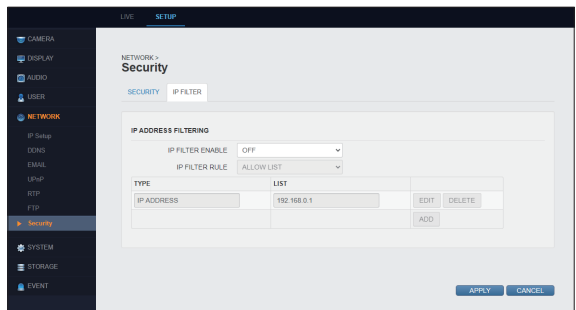
- › RTSP AUTHENTICATION : Sets whether to use RTSP. When enabled, you can choose between **<Basic/Digest>**.
- WEB SERVICE PORT
 - › HTTPS ENABLE : Sets whether to use HTTPS.
 - › HTTP AUTHENTICATION : Sets the HTTP authentication method.



2. IP FILTER

You can register and manage certain IP addresses to allow or deny their access.

- IP ADDRESS FILTERING
 - › IP FILTER ENABLE: Sets whether to use IP filter.
 - › IP FILTER RULE: Select the IP filter you want from **<ALLOW LIST/DENY LIST>**.
 - › TYPE: Select the IP type you wish to register. You can choose from **<IP ADDRESS/NETWORK A~C CLASS>**.
 - › LIST: View the information of the registered IP address.
 - › ADDRESS: Enter the IP address you wish to register.
 - › ADD: Register the IP address you wish to filter.
 - › EDIT: Change the registered IP address.
 - › DELETE: Remove the registered IP address.

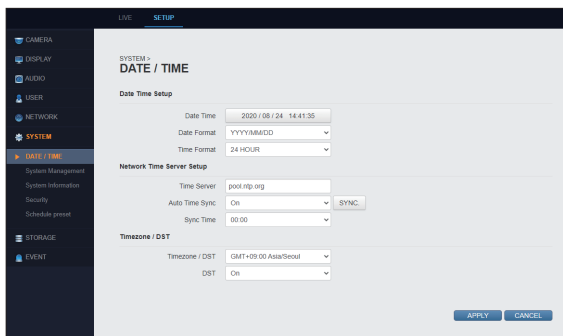


SYSTEM

DATE / TIME

You can set configurable date for system.
When completed, click <APPLY> to apply.

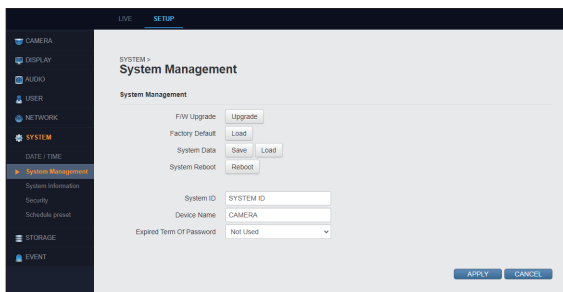
- Date Time Setup
 - › Date Time : Displays the date and time of current network camera.
 - › Date Format : Select your desired date format.
 - › Time Format : Select your desired time format.
- Network Time Server Setup
 - › Time Server : Enter server IP or host name.
 - › Auto Time Sync : Synchronizes the time automatically. Click the <SYNC.> to synchronize system time to an NTP server.
 - › Sync Time : If the Auto Time Sync is set to On, the system time is synchronized to the NTP server time in specified due time.
- Timezone / DST
 - › Timezone / DST : Select your desired time zone (divided into 24 time zones in the world)
 - › DST : Select whether to use Daylight Saving Time or not.



System Management

You can rename the network camera, restart the system, initialize to factory defaults, and update the firmware.
When completed, click <APPLY> to apply.

- › F/W Upgrade : Updates camera firmware.
 - ❗ If network transfer rate is slow, error may occur during firmware update process.
 - ❗ It is recommended to update your firmware during your camera and PC are connected with local network.
 - ❗ Do not shut down devices during firmware update process.
Camera will restart if update is finished. (It takes about 2-5 minutes)
 - ❗ Do not remove the USB device while the upgrade is in progress.
- › Factory Default : Restores your camera settings to factory defaults. (It takes about 1 minute)
- ✓ If you perform the <Factory Default>, all the settings excepting camera network settings will be initialized.
- › System Data : Save the system settings or get the system information from other device.
 - Save : Save the settings of your camera in connected PC.
 - Load : Copy the settings saved in the connected PC to the camera.
- › System Reboot : Restarts your network camera.(It takes about 1 minute)
- › System ID : Renames your camera.
- › Device Name : Sets the device name to be displayed on the screen.
- › Expired Term Of Password : You will be prompted to change the current password after a certain period of time.

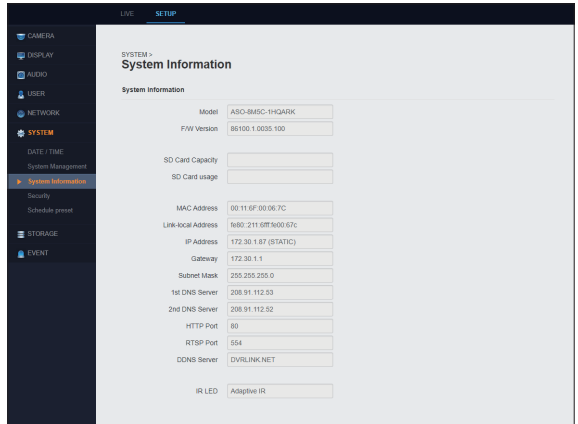


Web Viewer

System Information

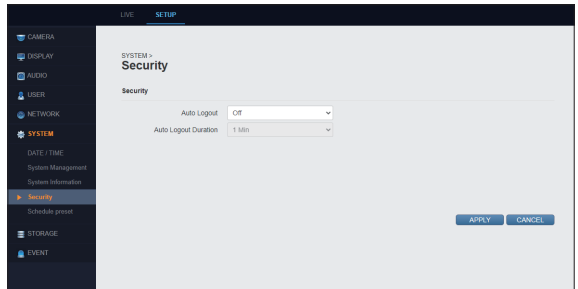
You can confirm the firmware version, model name, MAC address, IP address, etc. of your camera.

- › Model : Displays camera '**Model Name**'.
- › F/W Version : Displays camera '**F/W Version**'.
- › SD Card Capacity : The capacity of the SD card installed in the camera is displayed.
- › SD Card usage : The usage of the SD card attached to the camera is displayed.
- › MAC Address : Displays camera '**MAC Address**'.
- › Others : Displays network setup information for the camera.
- › IR LED : The camera's IR LED information is displayed.




Security

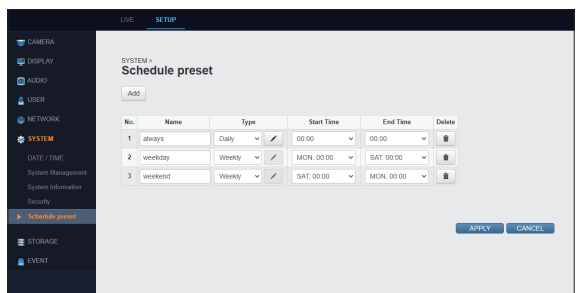
- › Auto Logout : If there is no user input for a certain period of time, you can set to log out automatically.
- › Auto Logout Duration : Specify the waiting time for Auto Logout.



Schedule preset

This function configures the Preset actions which will be activated during a live Event. Use the Schedule Preset function to arrange a schedule for a set of specific actions at specified time and then associate it with a specific event.

- › Name : Enter the name of preset.
- › Type : You can select one between **<Daily>** and **<Weekly>**, and decide your desired weekday(s) by clicking the .
- › Start/End Time : Set the start time and end time for schedule preset.
- › Add/Delete : Add or delete your desired schedule preset.

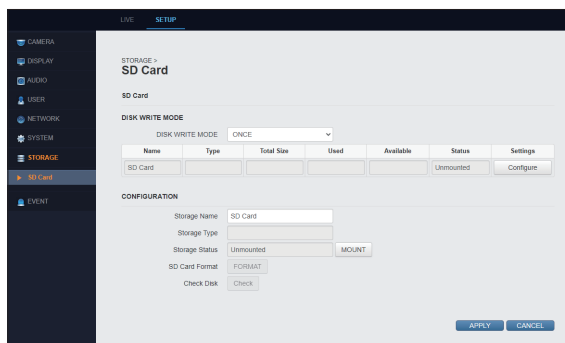


STORAGE

SD Card

You can set the inserted SD card directly.
When completed, click <APPLY> to apply.

- DISK WRITE MODE
 - › DISK WRITE MODE : If <ONCE> is selected, the SD card will stop recording when the SD card is full. If <OVERWRITE> is selected, old data will be deleted so that new data can be saved when the SD card is full.
- SD Card
 - › Total Size : Displays the total capacity of SD card.
 - › Used : Displays the occupied capacity of SD card.
 - › Available : Displays the remaining capacity of SD card.
 - › Status : Displays the information about SD card status.
- Configuration
 - › Storage Name : You can rename the storage device.
 - › Storage Type : Displays the type of the storage device.
 - › Storage Status : Displays the information about SD card status. Click the <UNMOUNT> to safely dismount the SD card.
 - › SD Card Format : Formats the SD card.
 - › Check Disk : Checks the status of your storage device.



✓ If the front cover is not completely fastened after mounting your SD card, the inside of camera may get damp.

Web Viewer

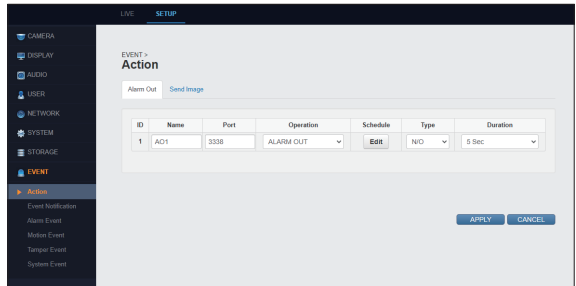
EVENT

Action

1. Alarm Out

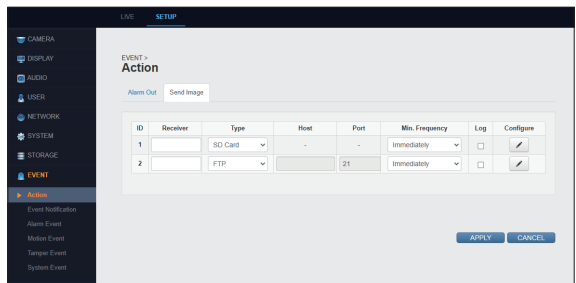
You can set the Alarm Out conditions and its schedule.

- › Name : Rename the alarm.
 - › Port : Specify the Alarm Out port.
 - › Operation : Specify the Alarm Out mode.
 - ALARM OUT : Alarm Out operates according to the mode.
 - ON : Always activate Alarm Out.
 - OFF : Alarm Out is disabled.
 - › Schedule : Arrange a schedule for the Alarm Out as you prefer.
- ✓ To set your preferred schedule, make a new preset in “SYSTEM > Schedule preset” (page 36).
- › Type : Specify the Alarm Out type.
 - › Duration : Specify the duration.



2. Send Image

- › Receiver : Enter the recipient's e-mail address to send the image.
- › Type : Send the image in your preferred type between <SD card> and <FTP>.
- › Host : If selecting <FTP> type, you can specify the host.
- › Min. Frequency : Specify the event transfer interval (Immediately or within 5~300 seconds).
- › Log : Specify whether to include the log or not when transferring the event.
- › Configure : You can set the <Receiver Type>, <Receiver>, <File Prefix>, <Min.Frequency>, <Log> and your preferred <Schedule>.



Event Notification

1. E-Mail

- E-Mail List

When an event occurs, email can be sent to a preset address. Click the **<Add>** button to register an e-mail.

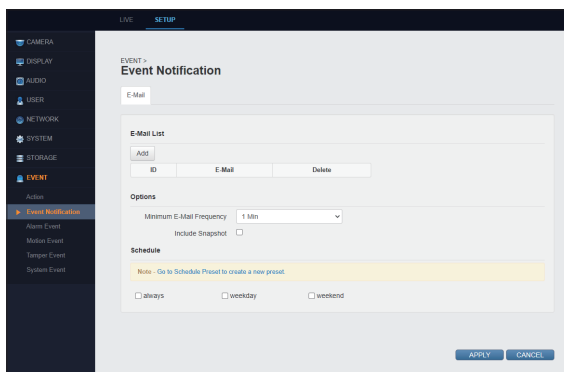
- Options

- › Minimum E-Mail Frequency : Specify the minimum e-mail frequency for notification.
- › Include Snapshot : Select whether to include snapshot(s) or not.

- Schedule

You can select your preferred event notification schedule.

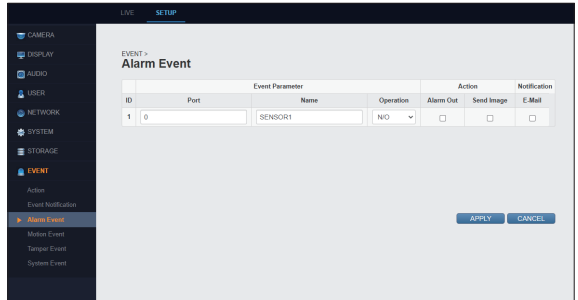
- ✓ To set your preferred schedule, make a new preset in "**SYSTEM > Schedule preset**" (page 36).



Web Viewer

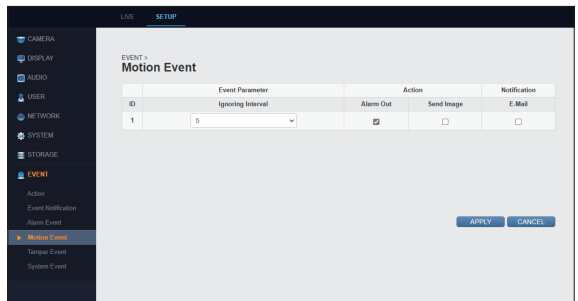
Alarm Event

- Event Parameter
 - › Port : Enter the alarm event port.
 - › Name : Enter the alarm event name.
 - › Operation : Select <N/O> or <N/C> for alarm event operation.
- ✓ For more information, refer to "**Event > Action**" (page 38).
- Action
 - › Alarm Out : Specify whether to activate Alarm Out or not when an event occurs.
 - › Send Image : Specify whether to send corresponding image or not when an event occurs.
- ✓ For more information, refer to "**Event > Action**" (page 38).
- Notification
 - › E-mail : Specify whether to send an e-mail notification or not when an event occurs.
- ✓ For detail settings, refer to "**Event > Event Notification**" (page 39).



Motion Event

- Event Parameter
 - › Ignoring Interval : Select the ignoring duration for detected motion event in the range of 5 through 30 seconds.
- Action
 - Setting details are the same as "**Event > Alarm Event**".
- Notification
 - Setting details are the same as "**Event > Alarm Event**".

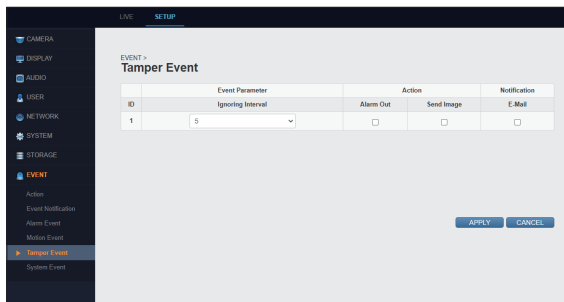


Tamper Event

- Event Parameter
 - › Ignoring Interval : Select the ignoring duration for detected motion event in the range of 5 through 30 seconds.
- Action

Setting details are the same as "**Event > Alarm Event**". (page 40)
- Notification

Setting details are the same as "**Event > Alarm Event**". (page 20)

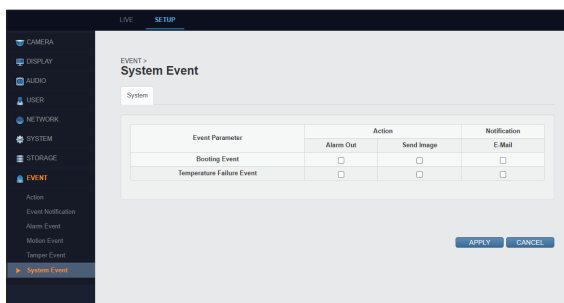


System Event

- Event Parameter
 - › Booting Event : Specify to activate an event when the system boots up.
 - › Temperature Failure Event : Specify to activate an event when a system temperature failure is detected.
- Action

Setting details are the same as "**Event > Alarm Event**". (page 40)
- Notification

Setting details are the same as "**Event > Alarm Event**". (page 40)



Web Viewer

Session Configuration

The Session Configuration influences only the browser in use. It has no effect on any other user.

! This is not the data saved in your camera. The configuration may have a different action depending on the internet browser.

- Player Selection

To select the player you want to use, go to **<Active X>** or **<No Plugin(JPEG only)>**.

- Viewer Setup

- › LiveView Protocol : You can select one among RTP Unicast (UDP) / RTP Multicast (UDP) / RTP over RTSP (TCP).

- › Buffering Time : Displayed in (0~90) x 1/30 sec. (0~3 sec.)

! If buffering time is slow, the video transmission is delayed.

- Toolbar Configuration

- › Snapshot : For capturing a snapshot, specify whether to save it in PC or not.

- › Panic Recording : Specify whether to save the emergency video in the PC or not.

- Download Location

- › Default Video Download Location : Change default video download path.

- › Default Snapshot Download Location : Change default snapshot download path.

- Display Option

- › Aspect Ratio

Select **<Adjust the aspect ratio to window size>** or **<Keep the aspect ratio of the original video>** for aspect ratio.

- Language

- › System Language : Language to be displayed by the product.

- › Session Language : You can change the session language. The changed language will only apply to the currently connected session.

The screenshot shows the 'Session Configuration' web interface. At the top, there are 'LIVE' and 'SETUP' tabs. The main title is 'Session Configuration'. The interface is divided into several sections:

- Player Selection:** Two radio buttons: 'Active X' (unselected) and 'No Plugin(JPEG only)' (selected).
- Viewer Setup:** A 'LiveView Protocol' dropdown menu set to 'RTP over RTSP (TCP)'. Below it, a 'Buffering Time' input field with the value '0' and a unit 'x 1/30sec: [0-90: 0-3sec:]'.
- Toolbar Configuration:** Two checkboxes: 'Snapshot' (unchecked) with 'Save snapshot on PC' and 'Panic Recording' (unchecked) with 'Save video on PC'.
- Download Location:** Two sections: 'Default Video Download Location' with a text input 'C:\SaveVideo' and a 'Change' button; 'Default Snapshot Download Location' with a text input 'C:\SaveSnapshot' and a 'Change' button.
- Display Option:** Two radio buttons: 'Adjust the aspect ratio to window size' (selected) and 'Keep the aspect ratio of the original video'.
- LANGUAGE:** Two dropdown menus: 'System Language' (set to 'ENGLISH') and 'Session Language' (set to 'ENGLISH').

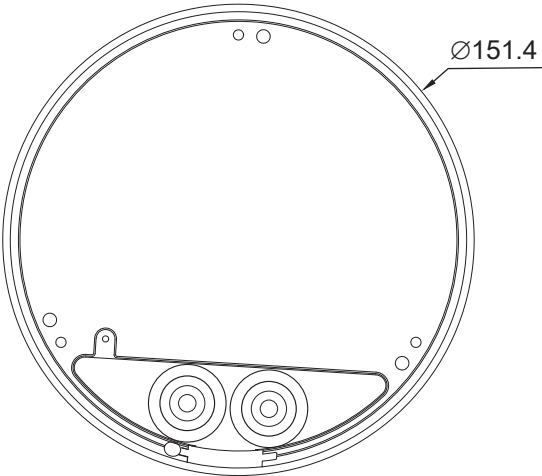
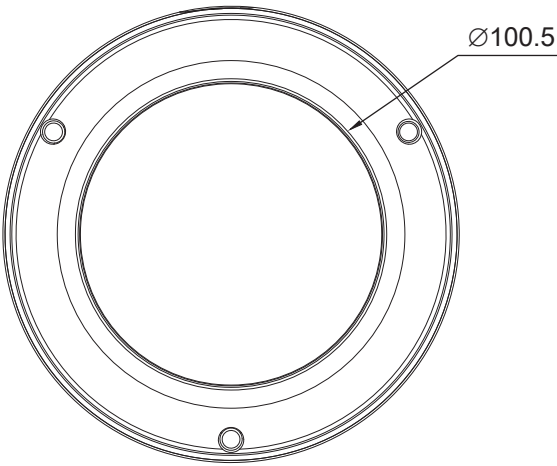
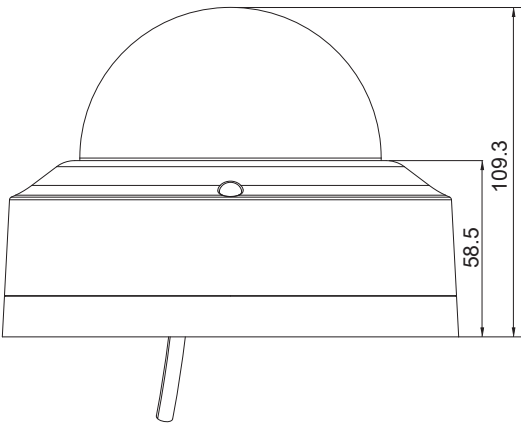
At the bottom right, there are 'APPLY' and 'CANCEL' buttons.

Troubleshooting (FAQ)

Problem and Symptom	Solution
I can't turn on camera.	<ul style="list-style-type: none">• Check the UTP cable connection.• If you use PoE power supply, check if enough power is supplied to PoE switch.
PC is not connected with network camera.	<ul style="list-style-type: none">• Check the status of LAN cable connected to network camera and the status of hub.• If the network camera's network setting was set to DHCP, check the IP address history of the DHCP server (router).• Check if camera network settings are changed or not by using ADMIN TOOL.
I cannot access via web or mobile application.	<ul style="list-style-type: none">• Check if the network cable for internet access is correctly connected with the LAN port in main body.• If you use sharer, check if port forwarding is correctly configured.
I cannot watch any video even though I can access to web or mobile application.	<ul style="list-style-type: none">• If you use sharer, check if port forwarding is correctly configured.• It may happen since communication company or network administrator has blocked the service port of network camera.• Change the RTSP port and HTTP port of your network camera and configure the port forwarding of sharer again.• Retry to access to web or mobile application by using new port.

Appendix

Product Overview



Open Source License Report on the Product

The software included in this product contains copyrighted software that is licensed under the GPL/LGPL.

- GPL Software : linux kernel, busybox, cdrtools, dvd+rw-tools, smartctl, uboot, bash, udev, syslogd
- LGPL Software : glibc, vmstat, glib, gtk, libESMTP, iconv, gstreamer, pango,
- OpenSSL License : OpenSSL

GNU GENERAL PUBLIC LICENSE

Version 2, June 1991

Copyright (C) 1989, 1991 Free Software Foundation, Inc.

51 Franklin Street, Fifth Floor, Boston, MA 02110-1301, USA

Everyone is permitted to copy and distribute verbatim copies of this license document, but changing it is not allowed.

Preamble

The licenses for most software are designed to take away your freedom to share and change it. By contrast, the GNU General Public License is intended to guarantee your freedom to share and change free software to make sure the software is free for all its users. This General Public License applies to most of the Free Software Foundation's software and to any other program whose authors commit to using it. (Some other Free Software Foundation software is covered by the GNU Lesser General Public License instead.) You can apply it to your programs, too.

When we speak of free software, we are referring to freedom, not price. Our General Public Licenses are designed to make sure that you have the freedom to distribute copies of free software (and charge for this service if you wish), that you receive source code or can get it if you want it, that you can change the software or use pieces of it in new free programs; and that you know you can do these things.

To protect your rights, we need to make restrictions that forbid anyone to deny you these rights or to ask you to surrender the rights. These restrictions translate to certain responsibilities for you if you distribute copies of the software, or if you modify it.

For example, if you distribute copies of such a program, whether gratis or for a fee, you must give the recipients all the rights that you have. You must make sure that they, too, receive or can get the source code. And you must show them these terms so they know their rights.

We protect your rights with two steps:

(1) copyright the software, and (2) offer you this license which gives you legal permission to copy, distribute and/or modify the software.

Also, for each author's protection and ours, we want to make certain that everyone understands that there is no warranty for this free software. If the software is modified by someone else and passed on, we want its recipients to know that what they have is not the original, so that any problems introduced by others will not reflect on the original authors' reputations.

Finally, any free program is threatened constantly by software patents. We wish to avoid the danger that redistributors of a free program will individually obtain patent licenses, in effect making the program proprietary. To prevent this, we have made it clear that any patent must be licensed for everyone's free use or not licensed at all. The precise terms and conditions for copying, distribution and modification follow.

TERMS AND CONDITIONS FOR COPYING, DISTRIBUTION AND MODIFICATION

Version 2, June 1991

Copyright (C) 1989, 1991 Free Software Foundation, Inc.

51 Franklin S

0. This License applies to any program or other work which contains a notice placed by the copyright holder saying it may be distributed under the terms of this General Public License. The "Program", below, refers to any such program or work, and a "work based on the Program" means either the Program or any derivative work under copyright law: that is to say, a work containing the Program or a portion of it, either verbatim or with modifications and/or translated into another language. (Hereinafter, translation is included without limitation in the term "modification".) Each licensee is addressed as "you".

Activities other than copying, distribution and modification are not covered by this License; they are outside its scope. The act of running the Program is not restricted, and the output from the Program is covered only if its contents constitute a work based on the Program (independent of having been made by running the Program). Whether that is true depends on what the Program does.

1. You may copy and distribute verbatim copies of the Program's source code as you receive it, in any medium, provided that you conspicuously and appropriately publish on each copy an appropriate copyright notice and disclaimer of warranty; keep intact all the notices that refer to this License and to the absence of any warranty; and give any other recipients of the Program a copy of this License along with the Program.

You may charge a fee for the physical act of transferring a copy, and you may at your option offer warranty protection in exchange for a fee.

2. You may modify your copy or copies of the Program or any portion of it, thus forming a work based on the Program, and copy and distribute such modifications or work under the terms of Section 1 above, provided that you also meet all of these conditions:

- a) You must cause the modified files to carry prominent notices stating that you changed the files and the date of any change.
- b) You must cause any work that you distribute or publish, that in whole or in part contains or is derived from the Program or any part thereof, to be licensed as a whole at no charge to all third parties under the terms of this License.
- c) If the modified program normally reads commands interactively when run, you must cause it, when started running for such interactive use in the most ordinary way, to print or display an announcement including an appropriate copyright notice and a notice that there is no warranty (or else, saying that you provide a warranty) and that users may redistribute the program under these conditions, and telling the user how to view a copy of this License. (Exception: if the Program itself is interactive but does not normally print such an announcement, your work based on the Program is not required to print an announcement.)

These requirements apply to the modified work as a whole. If identifiable sections of that work are not derived from the Program, and can be reasonably considered independent and separate works in themselves, then this License, and its terms, do not apply to those sections when you distribute them as separate works. But when you distribute the same sections as part of a whole which is a work based on the Program, the distribution of the whole must be on the terms of this License, whose permissions for other licensees extend to the entire whole, and thus to each and every part regardless of who wrote it.

Thus, it is not the intent of this section to claim rights or contest your rights to work written entirely by you; rather, the intent is to exercise the right to control the distribution of derivative or collective works based on the Program.

In addition, mere aggregation of another work not based on the Program with the Program (or with a work based on the Program) on a volume of a storage or distribution medium does not bring the other work under the scope of this License.

3. You may copy and distribute the Program (or a work based on it, under Section 2) in object code or executable form under the terms of Sections 1 and 2 above provided that you also do one of the following:

- a) Accompany it with the complete corresponding machine-readable source code, which must be distributed under the terms of Sections 1 and 2 above on a medium customarily used for software interchange; or,
- b) Accompany it with a written offer, valid for at least three years, to give any third party, for a charge no more than your cost of physically performing source distribution, a complete machine-readable copy of the corresponding source code, to be distributed under the terms of Sections 1 and 2 above on a medium customarily used for software interchange; or,

- c) Accompany it with the information you received as to the offer to distribute corresponding source code. (This alternative is allowed only for noncommercial distribution and only if you received the program in object code or executable form with such an offer, in accord with Subsection b above.)

The source code for a work means the preferred form of the work for making modifications to it. For an executable work, complete source code means all the source code for all modules it contains, plus any associated interface definition files, plus the scripts used to control compilation and installation of the executable. However, as a special exception, the source code distributed need not include anything that is normally distributed (in either source or binary form) with the major components (compiler, kernel, and so on) of the operating system on which the executable runs, unless that component itself accompanies the executable.

If distribution of executable or object code is made by offering access to copy from a designated place, then offering equivalent access to copy the source code from the same place counts as distribution of the source code, even though third parties are not compelled to copy the source along with the object code.

4. You may not copy, modify, sublicense, or distribute the Program except as expressly provided under this License. Any attempt otherwise to copy, modify, sublicense or distribute the Program is void, and will automatically terminate your rights under this License. However, parties who have received copies, or rights, from you under this License will not have their licenses terminated so long as such parties remain in full compliance.

5. You are not required to accept this License, since you have not signed it. However, nothing else grants you permission to modify or distribute the Program or its derivative works. These actions are prohibited by law if you do not accept this License. Therefore, by modifying or distributing the Program (or any work based on the Program), you indicate your acceptance of this License to do so, and all its terms and conditions for copying, distributing or modifying the Program or works based on it.

6. Each time you redistribute the Program (or any work based on the Program), the recipient automatically receives a license from the original licensor to copy, distribute or modify the Program subject to these terms and conditions. You may not impose any further restrictions on the recipients' exercise of the rights granted herein. You are not responsible for enforcing compliance by third parties to this License.

7. If, as a consequence of a court judgment or allegation of patent infringement or for any other reason (not limited to patent issues), conditions are imposed on you (whether by court order, agreement or otherwise) that contradict the conditions of this License, they do not excuse you from the conditions of this License. If you cannot distribute so as to satisfy simultaneously your obligations under this License and any other pertinent obligations, then as a consequence you may not distribute the Program at all. For example, if a patent license would not permit royalty-free redistribution of the Program by all those who receive copies directly or indirectly through you, then the only way you could satisfy both it and this License would be to refrain entirely from distribution of the Program.

If any portion of this section is held invalid or unenforceable under any particular circumstance, the balance of the section is intended to apply and the section as a whole is intended to apply in other circumstances.

It is not the purpose of this section to induce you to infringe any patents or other property right claims or to contest validity of any such claims; this section has the sole purpose of protecting the integrity of the free software distribution system, which is implemented by public license practices. Many people have made generous contributions to the wide range of software distributed through that system in reliance on consistent application of that system; it is up to the author/donor to decide if he or she is willing to distribute software through any other system and a licensee cannot impose that choice.

This section is intended to make thoroughly clear what is believed to be a consequence of the rest of this License.

8. If the distribution and/or use of the Program is restricted in certain countries either by patents or by copyrighted interfaces, the original copyright holder who places the Program under this License may add an explicit geographical distribution limitation excluding those countries, so that distribution is permitted only in or among countries not thus excluded. In such case, this License incorporates the limitation as if written in the body of this License.

9. The Free Software Foundation may publish revised and/or new versions of the General Public License from time to time. Such new versions will be similar in spirit to the present version, but may differ in detail to address new problems or concerns.

Each version is given a distinguishing version number. If the Program specifies a version number of this License which applies to it and "any later version", you have the option of following the terms and conditions either of that version or of any later version published by the Free Software Foundation. If the Program does not specify a version number of this License, you may choose any version ever published by the Free Software Foundation.

10. If you wish to incorporate parts of the Program into other free programs whose distribution conditions are different, write to the author to ask for permission. For software which is copyrighted by the Free Software Foundation, write to the Free Software Foundation; we sometimes make exceptions for this. Our decision will be guided by the two goals of preserving the free status of all derivatives of our free software and of promoting the sharing and reuse of software generally.

NO WARRANTY

11. BECAUSE THE PROGRAM IS LICENSED FREE OF CHARGE, THERE IS NO WARRANTY FOR THE PROGRAM, TO THE EXTENT PERMITTED BY APPLICABLE LAW. EXCEPT WHEN OTHERWISE STATED IN WRITING THE COPYRIGHT HOLDERS AND/OR OTHER PARTIES PROVIDE THE PROGRAM "AS IS" WITHOUT WARRANTY OF ANY KIND, EITHER EXPRESSED OR IMPLIED, INCLUDING, BUT NOT LIMITED TO, THE IMPLIED WARRANTIES OF MERCHANTABILITY AND FITNESS FOR A PARTICULAR PURPOSE. THE ENTIRE RISK AS TO THE QUALITY AND PERFORMANCE OF THE PROGRAM IS WITH YOU. SHOULD THE PROGRAM PROVE DEFECTIVE, YOU ASSUME THE COST OF ALL NECESSARY SERVICING, REPAIR OR CORRECTION.

12. IN NO EVENT UNLESS REQUIRED BY APPLICABLE LAW OR AGREED TO IN WRITING WILL ANY COPYRIGHT HOLDER, OR ANY OTHER PARTY WHO MAY MODIFY AND/OR REDISTRIBUTE THE PROGRAM AS PERMITTED ABOVE, BE LIABLE TO YOU FOR DAMAGES, INCLUDING ANY GENERAL, SPECIAL, INCIDENTAL OR CONSEQUENTIAL DAMAGES ARISING OUT OF THE USE OR INABILITY TO USE THE PROGRAM (INCLUDING BUT NOT LIMITED TO LOSS OF DATA OR DATA BEING RENDERED INACCURATE OR LOSSES SUSTAINED BY YOU OR THIRD PARTIES OR A FAILURE OF THE PROGRAM TO OPERATE WITH ANY OTHER PROGRAMS), EVEN IF SUCH HOLDER OR OTHER PARTY HAS BEEN ADVISED OF THE POSSIBILITY OF SUCH DAMAGES.

END OF TERMS AND CONDITIONS

How to Apply These Terms to Your New Programs

If you develop a new program, and you want it to be of the greatest possible use to the public, the best way to achieve this is to make it free software which everyone can redistribute and change under these terms.

To do so, attach the following notices to the program. It is safest to attach them to the start of each source file to most effectively convey the exclusion of warranty; and each file should have at least the "copyright" line and a pointer to where the full notice is found.

one line to give the program's name and an idea of what it does.

Copyright (C) yyyy name of author

This program is free software; you can redistribute it and/or modify it under the terms of the GNU General Public License as published by the Free Software Foundation; either version 2 of the License, or (at your option) any later version.

This program is distributed in the hope that it will be useful, but WITHOUT ANY WARRANTY; without even the implied warranty of MERCHANTABILITY or FITNESS FOR A PARTICULAR PURPOSE. See the GNU General Public License for more details.

You should have received a copy of the GNU General Public License along with this program; if not, write to the Free Software Foundation, Inc., 51 Franklin Street, Fifth Floor, Boston, MA 02110-1301, USA.

Also add information on how to contact you by electronic and paper mail. If the program is interactive, make it output a short notice like this when it starts in an interactive mode:

Gnomovision version 69, Copyright (C) year name of author Gnomovision comes with ABSOLUTELY NO WARRANTY; for details type 'show w'. This is free software, and you are welcome to redistribute it under certain conditions; type 'show c' for details.

The hypothetical commands 'show w' and 'show c' should show the appropriate parts of the General Public License. Of course, the commands you use may be called something other than 'show w' and 'show c'; they could even be mouse-clicks or menu items--whatever suits your program.

You should also get your employer (if you work as a programmer) or your school, if any, to sign a "copyright disclaimer" for the program, if necessary. Here is a sample; alter the names:

Yoyodyne, Inc., hereby disclaims all copyright interest in the program 'Gnomovision' (which makes passes at compilers) written by James Hacker.

signature of Ty Coon, 1 April 1989 Ty Coon, President of Vice This General Public License does not permit incorporating your program into proprietary programs. If your program is a subroutine library, you may consider it more useful to permit linking proprietary applications with the library. If this is what you want to do, use the GNU Lesser General Public License instead of this License.

GNU GENERAL PUBLIC LICENSE

Version 3, 29 June 2007

Copyright © 2007 Free Software Foundation, Inc. <<http://fsf.org/>>

Everyone is permitted to copy and distribute verbatim copies of this license document, but changing it is not allowed.

Preamble

The GNU General Public License is a free, copyleft license for software and other kinds of works.

The licenses for most software and other practical works are designed to take away your freedom to share and change the works. By contrast, the GNU General Public License is intended to guarantee your freedom to share and change all versions of a program--to make sure it remains free software for all its users. We, the Free Software Foundation, use the GNU General Public License for most of our software; it applies also to any other work released this way by its authors. You can apply it to your programs, too.

When we speak of free software, we are referring to freedom, not price. Our General Public Licenses are designed to make sure that you have the freedom to distribute copies of free software (and charge for them if you wish), that you receive source code or can get it if you want it, that you can change the software or use pieces of it in new free programs, and that you know you can do these things.

To protect your rights, we need to prevent others from denying you these rights or asking you to surrender the rights. Therefore, you have certain responsibilities if you distribute copies of the software, or if you modify it: responsibilities to respect the freedom of others.

For example, if you distribute copies of such a program, whether gratis or for a fee, you must pass on to the recipients the same freedoms that you received. You must make sure that they, too, receive or can get the source code. And you must show them these terms so they know their rights.

Developers that use the GNU GPL protect your rights with two steps: (1) assert copyright on the software, and (2) offer you this License giving you legal permission to copy, distribute and/or modify it.

For the developers' and authors' protection, the GPL clearly explains that there is no warranty for this free software. For both users' and authors' sake, the GPL requires that modified versions be marked as changed, so that their problems will not be attributed erroneously to authors of previous versions.

Some devices are designed to deny users access to install or run modified versions of the software inside them, although the manufacturer can do so. This is fundamentally incompatible with the aim of protecting users' freedom to change the software. The systematic pattern of such abuse occurs in the area of products for individuals to use, which is precisely where it is most unacceptable. Therefore, we have designed this version of the GPL to prohibit the practice for those products. If such problems arise substantially in other domains, we stand ready to extend this provision to those domains in future versions of the GPL, as needed to protect the freedom of users.

Finally, every program is threatened constantly by software patents. States should not allow patents to restrict development and use of software on general-purpose computers, but in those that do, we wish to avoid the special danger that patents applied to a free program could make it effectively proprietary. To prevent this, the GPL assures that patents cannot be used to render the program non-free.

The precise terms and conditions for copying, distribution and modification follow.

TERMS AND CONDITIONS

0. Definitions.

"This License" refers to version 3 of the GNU General Public License.

"Copyright" also means copyright-like laws that apply to other kinds of works, such as semiconductor masks.

"The Program" refers to any copyrightable work licensed under this License. Each licensee is addressed as "you". "Licensees" and "recipients" may be individuals or organizations.

To "modify" a work means to copy from or adapt all or part of the work in a fashion requiring copyright permission, other than the making of an exact copy. The resulting work is called a "modified version" of the earlier work or a work "based on" the earlier work.

A "covered work" means either the unmodified Program or a work based on the Program.

To "propagate" a work means to do anything with it that, without permission, would make you directly or secondarily liable for infringement under applicable copyright law, except executing it on a computer or modifying a private copy. Propagation includes copying, distribution (with or without modification), making available to the public, and in some countries other activities as well.

To "convey" a work means any kind of propagation that enables other parties to make or receive copies. Mere interaction with a user through a computer network, with no transfer of a copy, is not conveying.

An interactive user interface displays "Appropriate Legal Notices" to the extent that it includes a convenient and prominently visible feature that (1) displays an appropriate copyright notice, and (2) tells the user that there is no warranty for the work (except to the extent that warranties are provided), that licensees may convey the work under this License, and how to view a copy of this License. If the interface presents a list of user commands or options, such as a menu, a prominent item in the list meets this criterion.

1. Source Code.

The "source code" for a work means the preferred form of the work for making modifications to it. "Object code" means any non-source form of a work.

A "Standard Interface" means an interface that either is an official standard defined by a recognized standards body, or, in the case of interfaces specified for a particular programming language, one that is widely used among developers working in that language.

The "System Libraries" of an executable work include anything, other than the work as a whole, that (a) is included in the normal form of packaging a Major Component, but which is not part of that Major Component, and (b) serves only to enable use of the work with that Major Component, or to implement a Standard Interface for which an implementation is available to the public in source code form. A "Major Component", in this context, means a major essential component (kernel, window system, and so on) of the specific operating system (if any) on which the executable work runs, or a compiler used to produce the work, or an object code interpreter used to run it.

The "Corresponding Source" for a work in object code form means all the source code needed to generate, install, and (for an executable work) run the object code and to modify the work, including scripts to control those activities. However, it does not include the work's System Libraries, or general-purpose tools or generally available free programs which are used unmodified in performing those activities but which are not part of the work. For example, Corresponding Source includes interface definition files associated with source files for the work, and the source code for shared libraries and dynamically linked subprograms that the work is specifically designed to require, such as by intimate data communication or control flow between those subprograms and other parts of the work.

The Corresponding Source need not include anything that users can regenerate automatically from other parts of the Corresponding Source.

The Corresponding Source for a work in source code form is that same work.

2. Basic Permissions.

All rights granted under this License are granted for the term of copyright on the Program, and are irrevocable provided the stated conditions are met. This License explicitly affirms your unlimited permission to run the unmodified Program. The output from running a covered work is covered by this License only if the output, given its content, constitutes a covered work. This License acknowledges your rights of fair use or other equivalent, as provided by copyright law.

You may make, run and propagate covered works that you do not convey, without conditions so long as your license otherwise remains in force. You may convey covered works to others for the sole purpose of having them make modifications exclusively for you, or provide you with facilities for running those works, provided that you comply with the terms of this License in conveying all material for which you do not control copyright. Those thus making or running the covered works for you must do so exclusively on your behalf, under your direction and control, on terms that prohibit them from making any copies of your copyrighted material outside their relationship with you.

Conveying under any other circumstances is permitted solely under the conditions stated below. Sublicensing is not allowed; section 10 makes it unnecessary.

3. Protecting Users' Legal Rights From Anti-Circumvention Law.

No covered work shall be deemed part of an effective technological measure under any applicable law fulfilling obligations under article 11 of the WIPO copyright treaty adopted on 20 December 1996, or similar laws prohibiting or restricting circumvention of such measures.

When you convey a covered work, you waive any legal power to forbid circumvention of technological measures to the extent such circumvention is effected by exercising rights under this License with respect to the covered work, and you disclaim any intention to limit operation or modification of the work as a means of enforcing, against the work's users, your or third parties' legal rights to forbid circumvention of technological measures.

4. Conveying Verbatim Copies.

You may convey verbatim copies of the Program's source code as you receive it, in any medium, provided that you conspicuously and appropriately publish on each copy an appropriate copyright notice; keep intact all notices stating that this License and any non-permissive terms added in accord with section 7 apply to the code; keep intact all notices of the absence of any warranty; and give all recipients a copy of this License along with the Program.

You may charge any price or no price for each copy that you convey, and you may offer support or warranty protection for a fee.

5. Conveying Modified Source Versions.

You may convey a work based on the Program, or the modifications to produce it from the Program, in the form of source code under the terms of section 4, provided that you also meet all of these conditions:

- a) The work must carry prominent notices stating that you modified it, and giving a relevant date.
- b) The work must carry prominent notices stating that it is released under this License and any conditions added under section 7. This requirement modifies the requirement in section 4 to "keep intact all notices".
- c) You must license the entire work, as a whole, under this License to anyone who comes into possession of a copy. This License will therefore apply, along with any applicable section 7 additional terms, to the whole of the work, and all its parts, regardless of how they are packaged. This License gives no permission to license the work in any other way, but it does not invalidate such permission if you have separately received it.
- d) If the work has interactive user interfaces, each must display Appropriate Legal Notices; however, if the Program has interactive interfaces that do not display Appropriate Legal Notices, your work need not make them do so.

A compilation of a covered work with other separate and independent works, which are not by their nature extensions of the covered work, and which are not combined with it such as to form a larger program, in or on a volume of a storage or distribution medium, is called an "aggregate" if the compilation and its resulting copyright are not used to limit the access or legal rights of the compilation's users beyond what the individual works permit. Inclusion of a covered work in an aggregate does not cause this License to apply to the other parts of the aggregate.

6. Conveying Non-Source Forms.

You may convey a covered work in object code form under the terms of sections 4 and 5, provided that you also convey the machine-readable Corresponding Source under the terms of this License, in one of these ways:

- a) Convey the object code in, or embodied in, a physical product (including a physical distribution medium), accompanied by the Corresponding Source fixed on a durable physical medium customarily used for software interchange.
- b) Convey the object code in, or embodied in, a physical product (including a physical distribution medium), accompanied by a written offer, valid for at least three years and valid for as long as you offer spare parts or customer support for that product model, to give anyone who possesses the object code either (1) a copy of the Corresponding Source for all the software in the product that is covered by this License, on a durable physical medium customarily used for software interchange, for a price no more than your reasonable cost of physically performing this conveying of source, or (2) access to copy the Corresponding Source from a network server at no charge.
- c) Convey individual copies of the object code with a copy of the written offer to provide the Corresponding Source. This alternative is allowed only occasionally and noncommercially, and only if you received the object code with such an offer, in accord with subsection 6b.

- d) Convey the object code by offering access from a designated place (gratis or for a charge), and offer equivalent access to the Corresponding Source in the same way through the same place at no further charge. You need not require recipients to copy the Corresponding Source along with the object code. If the place to copy the object code is a network server, the Corresponding Source may be on a different server (operated by you or a third party) that supports equivalent copying facilities, provided you maintain clear directions next to the object code saying where to find the Corresponding Source. Regardless of what server hosts the Corresponding Source, you remain obligated to ensure that it is available for as long as needed to satisfy these requirements.
- e) Convey the object code using peer-to-peer transmission, provided you inform other peers where the object code and Corresponding Source of the work are being offered to the general public at no charge under subsection 6d.

A separable portion of the object code, whose source code is excluded from the Corresponding Source as a System Library, need not be included in conveying the object code work.

A "User Product" is either (1) a "consumer product", which means any tangible personal property which is normally used for personal, family, or household purposes, or (2) anything designed or sold for incorporation into a dwelling. In determining whether a product is a consumer product, doubtful cases shall be resolved in favor of coverage. For a particular product received by a particular user, "normally used" refers to a typical or common use of that class of product, regardless of the status of the particular user or of the way in which the particular user actually uses, or expects or is expected to use, the product. A product is a consumer product regardless of whether the product has substantial commercial, industrial or non-consumer uses, unless such uses represent the only significant mode of use of the product.

"Installation Information" for a User Product means any methods, procedures, authorization keys, or other information required to install and execute modified versions of a covered work in that User Product from a modified version of its Corresponding Source. The information must suffice to ensure that the continued functioning of the modified object code is in no case prevented or interfered with solely because modification has been made.

If you convey an object code work under this section in, or with, or specifically for use in, a User Product, and the conveying occurs as part of a transaction in which the right of possession and use of the User Product is transferred to the recipient in perpetuity or for a fixed term (regardless of how the transaction is characterized), the Corresponding Source conveyed under this section must be accompanied by the Installation Information. But this requirement does not apply if neither you nor any third party retains the ability to install modified object code on the User Product (for example, the work has been installed in ROM).

The requirement to provide Installation Information does not include a requirement to continue to provide support service, warranty, or updates for a work that has been modified or installed by the recipient, or for the User Product in which it has been modified or installed. Access to a network may be denied when the modification itself materially and adversely affects the operation of the network or violates the rules and protocols for communication across the network.

Corresponding Source conveyed, and Installation Information provided, in accord with this section must be in a format that is publicly documented (and with an implementation available to the public in source code form), and must require no special password or key for unpacking, reading or copying.

7. Additional Terms.

"Additional permissions" are terms that supplement the terms of this License by making exceptions from one or more of its conditions. Additional permissions that are applicable to the entire Program shall be treated as though they were included in this License, to the extent that they are valid under applicable law. If additional permissions apply only to part of the Program, that part may be used separately under those permissions, but the entire Program remains governed by this License without regard to the additional permissions.

When you convey a copy of a covered work, you may at your option remove any additional permissions from that copy, or from any part of it. (Additional permissions may be written to require their own removal in certain cases when you modify the work.) You may place additional permissions on material, added by you to a covered work, for which you have or can give appropriate copyright permission.

Notwithstanding any other provision of this License, for material you add to a covered work, you may (if authorized by the copyright holders of that material) supplement the terms of this License with terms:

- a) Disclaiming warranty or limiting liability differently from the terms of sections 15 and 16 of this License; or
- b) Requiring preservation of specified reasonable legal notices or author attributions in that material or in the Appropriate Legal Notices displayed by works containing it; or
- c) Prohibiting misrepresentation of the origin of that material, or requiring that modified versions of such material be marked in reasonable ways as different from the original version; or
- d) Limiting the use for publicity purposes of names of licensors or authors of the material; or
- e) Declining to grant rights under trademark law for use of some trade names, trademarks, or service marks; or
- f) Requiring indemnification of licensors and authors of that material by anyone who conveys the material (or modified versions of it) with contractual assumptions of liability to the recipient, for any liability that these contractual assumptions directly impose on those licensors and authors.

All other non-permissive additional terms are considered "further restrictions" within the meaning of section 10. If the Program as you received it, or any part of it, contains a notice stating that it is governed by this License along with a term that is a further restriction, you may remove that term. If a license document contains a further restriction but permits relicensing or conveying under this License, you may add to a covered work material governed by the terms of that license document, provided that the further restriction does not survive such relicensing or conveying.

If you add terms to a covered work in accord with this section, you must place, in the relevant source files, a statement of the additional terms that apply to those files, or a notice indicating where to find the applicable terms.

Additional terms, permissive or non-permissive, may be stated in the form of a separately written license, or stated as exceptions; the above requirements apply either way.

8. Termination.

You may not propagate or modify a covered work except as expressly provided under this License. Any attempt otherwise to propagate or modify it is void, and will automatically terminate your rights under this License (including any patent licenses granted under the third paragraph of section 11).

However, if you cease all violation of this License, then your license from a particular copyright holder is reinstated (a) provisionally, unless and until the copyright holder explicitly and finally terminates your license, and (b) permanently, if the copyright holder fails to notify you of the violation by some reasonable means prior to 60 days after the cessation.

Moreover, your license from a particular copyright holder is reinstated permanently if the copyright holder notifies you of the violation by some reasonable means, this is the first time you have received notice of violation of this License (for any work) from that copyright holder, and you cure the violation prior to 30 days after your receipt of the notice.

Termination of your rights under this section does not terminate the licenses of parties who have received copies or rights from you under this License. If your rights have been terminated and not permanently reinstated, you do not qualify to receive new licenses for the same material under section 10.

9. Acceptance Not Required for Having Copies.

You are not required to accept this License in order to receive or run a copy of the Program. Ancillary propagation of a covered work occurring solely as a consequence of using peer-to-peer transmission to receive a copy likewise does not require acceptance. However, nothing other than this License grants you permission to propagate or modify any covered work. These actions infringe copyright if you do not accept this License. Therefore, by modifying or propagating a covered work, you indicate your acceptance of this License to do so.

10. Automatic Licensing of Downstream Recipients.

Each time you convey a covered work, the recipient automatically receives a license from the original licensors, to run, modify and propagate that work, subject to this License. You are not responsible for enforcing compliance by third parties with this License.

An "entity transaction" is a transaction transferring control of an organization, or substantially all assets of one, or subdividing an organization, or merging organizations. If propagation of a covered work results from an entity transaction, each party to that transaction who receives a copy of the work also receives whatever licenses to the work the party's predecessor in interest had or could give under the previous paragraph, plus a right to possession of the Corresponding Source of the work from the predecessor in interest, if the predecessor has it or can get it with reasonable efforts.

You may not impose any further restrictions on the exercise of the rights granted or affirmed under this License. For example, you may not impose a license fee, royalty, or other charge for exercise of rights granted under this License, and you may not initiate litigation (including a cross-claim or counterclaim in a lawsuit) alleging that any patent claim is infringed by making, using, selling, offering for sale, or importing the Program or any portion of it.

11. Patents.

A "contributor" is a copyright holder who authorizes use under this License of the Program or a work on which the Program is based. The work thus licensed is called the contributor's "contributor version".

A contributor's "essential patent claims" are all patent claims owned or controlled by the contributor, whether already acquired or hereafter acquired, that would be infringed by some manner, permitted by this License, of making, using, or selling its contributor version, but do not include claims that would be infringed only as a consequence of further modification of the contributor version. For purposes of this definition, "control" includes the right to grant patent sublicenses in a manner consistent with the requirements of this License.

Each contributor grants you a non-exclusive, worldwide, royalty-free patent license under the contributor's essential patent claims, to make, use, sell, offer for sale, import and otherwise run, modify and propagate the contents of its contributor version.

In the following three paragraphs, a "patent license" is any express agreement or commitment, however denominated, not to enforce a patent (such as an express permission to practice a patent or covenant not to sue for patent infringement). To "grant" such a patent license to a party means to make such an agreement or commitment not to enforce a patent against the party.

If you convey a covered work, knowingly relying on a patent license, and the Corresponding Source of the work is not available for anyone to copy, free of charge and under the terms of this License, through a publicly available network server or other readily accessible means, then you must either (1) cause the Corresponding Source to be so available, or (2) arrange to deprive yourself of the benefit of the patent license for this particular work, or (3) arrange, in a manner consistent with the requirements of this License, to extend the patent license to downstream recipients. "Knowingly relying" means you have actual knowledge that, but for the patent license, your conveying the covered work in a country, or your recipient's use of the covered work in a country, would infringe one or more identifiable patents in that country that you have reason to believe are valid.

If, pursuant to or in connection with a single transaction or arrangement, you convey, or propagate by procuring conveyance of, a covered work, and grant a patent license to some of the parties receiving the covered work authorizing them to use, propagate, modify or convey a specific copy of the covered work, then the patent license you grant is automatically extended to all recipients of the covered work and works based on it.

A patent license is "discriminatory" if it does not include within the scope of its coverage, prohibits the exercise of, or is conditioned on the non-exercise of one or more of the rights that are specifically granted under this License. You may not convey a covered work if you are a party to an arrangement with a third party that is in the business of distributing software, under which you make payment to the third party based on the extent of your activity of conveying the work, and under which the third party grants, to any of the parties who would receive the covered work from you, a discriminatory patent license (a) in connection with copies of the covered work conveyed by you (or copies made from those copies), or (b) primarily for and in connection with specific products or compilations that contain the covered work, unless you entered into that arrangement, or that patent license was granted, prior to 28 March 2007.

Nothing in this License shall be construed as excluding or limiting any implied license or other defenses to infringement that may otherwise be available to you under applicable patent law.

12. No Surrender of Others' Freedom.

If conditions are imposed on you (whether by court order, agreement or otherwise) that contradict the conditions of this License, they do not excuse you from the conditions of this License. If you cannot convey a covered work so as to satisfy simultaneously your obligations under this License and any other pertinent obligations, then as a consequence you may not convey it at all. For example, if you agree to terms that obligate you to collect a royalty for further conveying from those to whom you convey the Program, the only way you could satisfy both those terms and this License would be to refrain entirely from conveying the Program.

13. Use with the GNU Affero General Public License.

Notwithstanding any other provision of this License, you have permission to link or combine any covered work with a work licensed under version 3 of the GNU Affero General Public License into a single combined work, and to convey the resulting work. The terms of this License will continue to apply to the part which is the covered work, but the special requirements of the GNU Affero General Public License, section 13, concerning interaction through a network will apply to the combination as such.

14. Revised Versions of this License.

The Free Software Foundation may publish revised and/or new versions of the GNU General Public License from time to time. Such new versions will be similar in spirit to the present version, but may differ in detail to address new problems or concerns.

Each version is given a distinguishing version number. If the Program specifies that a certain numbered version of the GNU General Public License "or any later version" applies to it, you have the option of following the terms and conditions either of that numbered version or of any later version published by the Free Software Foundation. If the Program does not specify a version number of the GNU General Public License, you may choose any version ever published by the Free Software Foundation.

If the Program specifies that a proxy can decide which future versions of the GNU General Public License can be used, that proxy's public statement of acceptance of a version permanently authorizes you to choose that version for the Program.

Later license versions may give you additional or different permissions. However, no additional obligations are imposed on any author or copyright holder as a result of your choosing to follow a later version.

15. Disclaimer of Warranty.

THERE IS NO WARRANTY FOR THE PROGRAM, TO THE EXTENT PERMITTED BY APPLICABLE LAW. EXCEPT WHEN OTHERWISE STATED IN WRITING THE COPYRIGHT HOLDERS AND/OR OTHER PARTIES PROVIDE THE PROGRAM "AS IS" WITHOUT WARRANTY OF ANY KIND, EITHER EXPRESSED OR IMPLIED, INCLUDING, BUT NOT LIMITED TO, THE IMPLIED WARRANTIES OF MERCHANTABILITY AND FITNESS FOR A PARTICULAR PURPOSE. THE ENTIRE RISK AS TO THE QUALITY AND PERFORMANCE OF THE PROGRAM IS WITH YOU. SHOULD THE PROGRAM PROVE DEFECTIVE, YOU ASSUME THE COST OF ALL NECESSARY SERVICING, REPAIR OR CORRECTION.

16. Limitation of Liability.

IN NO EVENT UNLESS REQUIRED BY APPLICABLE LAW OR AGREED TO IN WRITING WILL ANY COPYRIGHT HOLDER, OR ANY OTHER PARTY WHO MODIFIES AND/OR CONVEYS THE PROGRAM AS PERMITTED ABOVE, BE LIABLE TO YOU FOR DAMAGES, INCLUDING ANY GENERAL, SPECIAL, INCIDENTAL OR CONSEQUENTIAL DAMAGES ARISING OUT OF THE USE OR INABILITY TO USE THE PROGRAM (INCLUDING BUT NOT LIMITED TO LOSS OF DATA OR DATA BEING RENDERED INACCURATE OR LOSSES SUSTAINED BY YOU OR THIRD PARTIES OR A FAILURE OF THE PROGRAM TO OPERATE WITH ANY OTHER PROGRAMS), EVEN IF SUCH HOLDER OR OTHER PARTY HAS BEEN ADVISED OF THE POSSIBILITY OF SUCH DAMAGES.

17. Interpretation of Sections 15 and 16.

If the disclaimer of warranty and limitation of liability provided above cannot be given local legal effect according to their terms, reviewing courts shall apply local law that most closely approximates an absolute waiver of all civil liability in connection with the Program, unless a warranty or assumption of liability accompanies a copy of the Program in return for a fee.

END OF TERMS AND CONDITIONS

GNU LESSER GENERAL PUBLIC LICENSE

Version 2.1, February 1999

Copyright (C) 1991, 1999 Free Software Foundation, Inc.

51 Franklin Street, Fifth Floor, Boston, MA 02110-1301 USA

Everyone is permitted to copy and distribute verbatim copies of this license document, but changing it is not allowed.

[This is the first released version of the Lesser GPL.

It also counts as the successor of the GNU Library Public License, version 2, hence the version number 2.1.]

Preamble

The licenses for most software are designed to take away your freedom to share and change it. By contrast, the GNU General Public Licenses are intended to guarantee your freedom to share and change free software to make sure the software is free for all its users.

This license, the Lesser General Public License, applies to some specially designated software packages--typically libraries--of the Free Software Foundation and other authors who decide to use it. You can use it too, but we suggest you first think carefully about whether this license or the ordinary General Public License is the better strategy to use in any particular case, based on the explanations below.

When we speak of free software, we are referring to freedom of use, not price. Our General Public Licenses are designed to make sure that you have the freedom to distribute copies of free software (and charge for this service if you wish); that you receive source code or can get it if you want it; that you can change the software and use pieces of it in new free

programs; and that you are informed that you can do these things.

To protect your rights, we need to make restrictions that forbid distributors to deny you these rights or to ask you to surrender these rights. These restrictions translate to certain responsibilities for you if you distribute copies of the library or if you modify it.

For example, if you distribute copies of the library, whether gratis or for a fee, you must give the recipients all the rights that we gave you. You must make sure that they, too, receive or can get the source code. If you link other code with the library, you must provide complete object files to the recipients, so that they can relink them with the library after making changes to the library and recompiling it. And you must show them these terms so they know their rights.

We protect your rights with a two-step method: (1) we copyright the library, and (2) we offer you this license, which gives you legal permission to copy, distribute and/or modify the library.

To protect each distributor, we want to make it very clear that there is no warranty for the free library. Also, if the library is modified by someone else and passed on, the recipients should know that what they have is not the original version, so that the original author's reputation will not be affected by problems that might be introduced by others.

Finally, software patents pose a constant threat to the existence of any free program. We wish to make sure that a company cannot effectively restrict the users of a free program by obtaining a restrictive license from a patent holder. Therefore, we insist that any patent license obtained for a version of the library must be consistent with the full freedom of use specified in this license.

Most GNU software, including some libraries, is covered by the ordinary GNU General Public License. This license, the GNU Lesser General Public License, applies to certain designated libraries, and is quite different from the ordinary General Public License. We use this license for certain libraries in order to permit linking those libraries into non-free programs.

When a program is linked with a library, whether statically or using a shared library, the combination of the two is legally speaking a combined work, a derivative of the original library. The ordinary General Public License therefore permits such linking only if the entire combination fits its criteria of freedom. The Lesser General Public License permits more lax criteria for linking other code with the library.

We call this license the "Lesser" General Public License because it does Less to protect the user's freedom than the ordinary General Public License. It also provides other free software developers Less of an advantage over competing non-free programs. These disadvantages are the reason we use the ordinary General Public License for many libraries. However, the Lesser license provides advantages in certain special circumstances.

For example, on rare occasions, there may be a special need to encourage the widest possible use of a certain library, so that it becomes a de-facto standard. To achieve this, non-free programs must be allowed to use the library. A more frequent case is that a free library does the same job as widely used non-free libraries. In this case, there is little to gain by limiting the free library to free software only, so we use the Lesser General Public License.

In other cases, permission to use a particular library in non-free programs enables a greater number of people to use a large body of free software. For example, permission to use the GNU C Library in non-free programs enables many more people to use the whole GNU operating system, as well as its variant, the GNU/Linux operating system.

Although the Lesser General Public License is Less protective of the users' freedom, it does ensure that the user of a program that is linked with the Library has the freedom and the wherewithal to run that program using a modified version of the Library.

The precise terms and conditions for copying, distribution and modification follow. Pay close attention to the difference between a "work based on the library" and a "work that uses the library". The former contains code derived from the library, whereas the latter must be combined with the library in order to run.

TERMS AND CONDITIONS FOR COPYING, DISTRIBUTION AND MODIFICATION

0. This License Agreement applies to any software library or other program which contains a notice placed by the copyright holder or other authorized party saying it may be distributed under the terms of this Lesser General Public License (also called "this License"). Each licensee is addressed as "you".

A "library" means a collection of software functions and/or data prepared so as to be conveniently linked with application programs (which use some of those functions and data) to form executables.

The "Library", below, refers to any such software library or work which has been distributed under these terms. A "work based on the Library" means either the Library or any derivative work under copyright law: that is to say, a work containing the Library or a portion of it, either verbatim or with modifications and/or translated straightforwardly into another language. (Hereinafter, translation is included without limitation in the term "modification".)

"Source code" for a work means the preferred form of the work for making modifications to it. For a library, complete source code means all the source code for all modules it contains, plus any associated interface definition files, plus the scripts used to control compilation and installation of the library.

Activities other than copying, distribution and modification are not covered by this License; they are outside its scope. The act of running a program using the Library is not restricted, and output from such a program is covered only if its contents constitute a work based on the Library (independent of the use of the Library in a tool for writing it). Whether that is true depends on what the Library does and what the program that uses the Library does.

1. You may copy and distribute verbatim copies of the Library's complete source code as you receive it, in any medium, provided that you conspicuously and appropriately publish on each copy an appropriate copyright notice and disclaimer of warranty; keep intact all the notices that refer to this License and to the absence of any warranty; and distribute a copy of this License along with the Library.

You may charge a fee for the physical act of transferring a copy, and you may at your option offer warranty protection in exchange for a fee.

2. You may modify your copy or copies of the Library or any portion of it, thus forming a work based on the Library, and copy and distribute such modifications or work under the terms of Section 1 above, provided that you also meet all of these conditions:

- a) The modified work must itself be a software library.
- b) You must cause the files modified to carry prominent notices stating that you changed the files and the date of any change.
- c) You must cause the whole of the work to be licensed at no charge to all third parties under the terms of this License.
- d) If a facility in the modified Library refers to a function or a table of data to be supplied by an application program that uses the facility, other than as an argument passed when the facility is invoked, then you must make a good faith effort to ensure that, in the event an application does not supply such function or table, the facility still operates, and performs whatever part of its purpose remains meaningful.

(For example, a function in a library to compute square roots has a purpose that is entirely well-defined independent of the application. Therefore, Subsection 2d requires that any application-supplied function or table used by this function must be optional: if the application does not supply it, the square root function must still compute square roots.)

These requirements apply to the modified work as a whole. If identifiable sections of that work are not derived from the Library, and can be reasonably considered independent and separate works in themselves, then this License, and its terms, do not apply to those sections when you distribute them as separate works. But when you distribute the same sections as part of a whole which is a work based on the Library, the distribution of the whole must be on the terms of this License, whose permissions for other licensees extend to the entire whole, and thus to each and every part regardless of who wrote it.

Thus, it is not the intent of this section to claim rights or contest your rights to work written entirely by you; rather, the intent is to exercise the right to control the distribution of derivative or collective works based on the Library.

In addition, mere aggregation of another work not based on the Library with the Library (or with a work based on the Library) on a volume of a storage or distribution medium does not bring the other work under the scope of this License.

3. You may opt to apply the terms of the ordinary GNU General Public License instead of this License to a given copy of the Library. To do this, you must alter all the notices that refer to this License, so that they refer to

the ordinary GNU General Public License, version 2, instead of to this License. (If a newer version than version 2 of the ordinary GNU General Public License has appeared, then you can specify that version instead if you wish.) Do not make any other change in these notices.

Once this change is made in a given copy, it is irreversible for that copy, so the ordinary GNU General Public License applies to all subsequent copies and derivative works made from that copy.

This option is useful when you wish to copy part of the code of the Library into a program that is not a library.

4. You may copy and distribute the Library (or a portion or derivative of it, under Section 2) in object code or executable form under the terms of Sections 1 and 2 above provided that you accompany it with the complete corresponding machine-readable source code, which must be distributed under the terms of Sections 1 and 2 above on a medium customarily used for software interchange.

If distribution of object code is made by offering access to copy from a designated place, then offering equivalent access to copy the source code from the same place satisfies the requirement to distribute the source code, even though third parties are not compelled to copy the source along with the object code.

5. A program that contains no derivative of any portion of the Library, but is designed to work with the Library by being compiled or linked with it, is called a "work that uses the Library". Such a work, in isolation, is not a derivative work of the Library, and therefore falls outside the scope of this License.

However, linking a "work that uses the Library" with the Library creates an executable that is a derivative of the Library (because it contains portions of the Library), rather than a "work that uses the library". The executable is therefore covered by this License. Section 6 states terms for distribution of such executables.

When a "work that uses the Library" uses material from a header file that is part of the Library, the object code for the work may be a derivative work of the Library even though the source code is not. Whether this is true is especially significant if the work can be linked without the Library, or if the work is itself a library. The threshold for this to be true is not precisely defined by law.

If such an object file uses only numerical parameters, data structure layouts and accessors, and small macros and small inline functions (ten lines or less in length), then the use of the object file is unrestricted, regardless of whether it is legally a derivative work. (Executables containing this object code plus portions of the Library will still fall under Section 6.)

Otherwise, if the work is a derivative of the Library, you may distribute the object code for the work under the terms of Section 6. Any executables containing that work also fall under Section 6, whether or not they are linked directly with the Library itself.

6. As an exception to the Sections above, you may also combine or link a "work that uses the Library" with the Library to produce a work containing portions of the Library, and distribute that work under terms of your choice, provided that the terms permit modification of the work for the customer's own use and reverse engineering for debugging such modifications.

You must give prominent notice with each copy of the work that the Library is used in it and that the Library and its use are covered by this License. You must supply a copy of this License. If the work during execution displays copyright notices, you must include the copyright notice for the Library among them, as well as a reference directing the user to the copy of this License. Also, you must do one of these things:

- a) Accompany the work with the complete corresponding machine-readable source code for the Library including whatever changes were used in the work (which must be distributed under Sections 1 and 2 above); and, if the work is an executable linked with the Library, with the complete machine readable "work that uses the Library", as object code and/or source code, so that the user can modify the Library and then relink to produce a modified executable containing the modified Library. (It is understood that the user who changes the contents of definitions files in the Library will not necessarily be able to recompile the application to use the modified definitions.)

- b) Use a suitable shared library mechanism for linking with the Library. A suitable mechanism is one that (1) uses at run time a copy of the library already present on the user's computer system, rather than copying library functions into the executable, and (2) will operate properly with a modified version of the library, if the user installs one, as long as the modified version is interface-compatible with the version that the work was made with.
- c) Accompany the work with a written offer, valid for at least three years, to give the same user the materials specified in Subsection 6a, above, for a charge no more than the cost of performing this distribution.
- d) If distribution of the work is made by offering access to copy from a designated place, offer equivalent access to copy the above specified materials from the same place.
- e) Verify that the user has already received a copy of these materials or that you have already sent this user a copy.

For an executable, the required form of the "work that uses the Library" must include any data and utility programs needed for reproducing the executable from it. However, as a special exception, the materials to be distributed need not include anything that is normally distributed (in either source or binary form) with the major components (compiler, kernel, and so on) of the operating system on which the executable runs, unless that component itself accompanies the executable.

It may happen that this requirement contradicts the license restrictions of other proprietary libraries that do not normally accompany the operating system. Such a contradiction means you cannot use both them and the Library together in an executable that you distribute.

7. You may place library facilities that are a work based on the Library side-by-side in a single library together with other library facilities not covered by this License, and distribute such a combined library, provided that the separate distribution of the work based on the Library and of the other library facilities is otherwise permitted, and provided that you do these two things:

- a) Accompany the combined library with a copy of the same work based on the Library, uncombined with any other library facilities. This must be distributed under the terms of the Sections above.
- b) Give prominent notice with the combined library of the fact that part of it is a work based on the Library, and explaining where to find the accompanying uncombined form of the same work.

8. You may not copy, modify, sublicense, link with, or distribute the Library except as expressly provided under this License. Any attempt otherwise to copy, modify, sublicense, link with, or distribute the Library is void, and will automatically terminate your rights under this License. However, parties who have received copies, or rights, from you under this License will not have their licenses terminated so long as such parties remain in full compliance.

9. You are not required to accept this License, since you have not signed it. However, nothing else grants you permission to modify or distribute the Library or its derivative works. These actions are prohibited by law if you do not accept this License. Therefore, by modifying or distributing the Library (or any work based on the Library), you indicate your acceptance of this License to do so, and all its terms and conditions for copying, distributing or modifying the Library or works based on it.

10. Each time you redistribute the Library (or any work based on the Library), the recipient automatically receives a license from the original licensor to copy, distribute, link with or modify the Library subject to these terms and conditions. You may not impose any further restrictions on the recipients' exercise of the rights granted herein. You are not responsible for enforcing compliance by third parties with this License.

11. If, as a consequence of a court judgment or allegation of patent infringement or for any other reason (not limited to patent issues), conditions are imposed on you (whether by court order, agreement or otherwise) that contradict the conditions of this License, they do not excuse you from the conditions of this License. If you cannot distribute so as to satisfy simultaneously your obligations under this License and any other pertinent obligations, then as a consequence you may not distribute

the Library at all. For example, if a patent license would not permit royalty free redistribution of the Library by all those who receive copies directly or indirectly through you, then the only way you could satisfy both it and this License would be to refrain entirely from distribution of the Library.

If any portion of this section is held invalid or unenforceable under any particular circumstance, the balance of the section is intended to apply, and the section as a whole is intended to apply in other circumstances.

It is not the purpose of this section to induce you to infringe any patents or other property right claims or to contest validity of any such claims; this section has the sole purpose of protecting the integrity of the free software distribution system which is implemented by public license practices. Many people have made generous contributions to the wide range of software distributed through that system in reliance on consistent application of that system; it is up to the author/donor to decide if he or she is willing to distribute software through any other system and a licensee cannot impose that choice.

This section is intended to make thoroughly clear what is believed to be a consequence of the rest of this License.

12. If the distribution and/or use of the Library is restricted in certain countries either by patents or by copyrighted interfaces, the original copyright holder who places the Library under this License may add an explicit geographical distribution limitation excluding those countries, so that distribution is permitted only in or among countries not thus excluded. In such case, this License incorporates the limitation as if written in the body of this License.

13. The Free Software Foundation may publish revised and/or new versions of the Lesser General Public License from time to time. Such new versions will be similar in spirit to the present version, but may differ in detail to address new problems or concerns.

Each version is given a distinguishing version number. If the Library specifies a version number of this License which applies to it and "any later version", you have the option of following the terms and conditions either of that version or of any later version published by the Free Software Foundation. If the Library does not specify a license version number, you may choose any version ever published by the Free Software Foundation.

14. If you wish to incorporate parts of the Library into other free programs whose distribution conditions are incompatible with these, write to the author to ask for permission. For software which is copyrighted by the Free Software Foundation, write to the Free Software Foundation; we sometimes make exceptions for this. Our decision will be guided by the two goals of preserving the free status of all derivatives of our free software and of promoting the sharing and reuse of software generally.

NO WARRANTY

15. BECAUSE THE LIBRARY IS LICENSED FREE OF CHARGE, THERE IS NO WARRANTY FOR THE LIBRARY, TO THE EXTENT PERMITTED BY APPLICABLE LAW. EXCEPT WHEN OTHERWISE STATED IN WRITING THE COPYRIGHT HOLDERS AND/OR OTHER PARTIES PROVIDE THE LIBRARY "AS IS" WITHOUT WARRANTY OF ANY KIND, EITHER EXPRESSED OR IMPLIED, INCLUDING, BUT NOT LIMITED TO, THE IMPLIED WARRANTIES OF MERCHANTABILITY AND FITNESS FOR A PARTICULAR PURPOSE. THE ENTIRE RISK AS TO THE QUALITY AND PERFORMANCE OF THE LIBRARY IS WITH YOU. SHOULD THE LIBRARY PROVE DEFECTIVE, YOU ASSUME THE COST OF ALL NECESSARY SERVICING, REPAIR OR CORRECTION.

16. IN NO EVENT UNLESS REQUIRED BY APPLICABLE LAW OR AGREED TO IN WRITING WILL ANY COPYRIGHT HOLDER, OR ANY OTHER PARTY WHO MAY MODIFY AND/OR REDISTRIBUTE THE LIBRARY AS PERMITTED ABOVE, BE LIABLE TO YOU FOR DAMAGES, INCLUDING ANY GENERAL, SPECIAL, INCIDENTAL OR CONSEQUENTIAL DAMAGES ARISING OUT OF THE USE OR INABILITY TO USE THE LIBRARY (INCLUDING BUT NOT LIMITED TO LOSS OF DATA OR DATA BEING RENDERED INACCURATE OR LOSSES SUSTAINED BY YOU OR THIRD PARTIES OR A FAILURE OF THE LIBRARY TO OPERATE WITH ANY OTHER SOFTWARE), EVEN IF SUCH HOLDER OR OTHER PARTY HAS BEEN ADVISED OF THE POSSIBILITY OF SUCH DAMAGES.

END OF TERMS AND CONDITIONS

How to Apply These Terms to Your New Libraries

If you develop a new library, and you want it to be of the greatest possible use to the public, we recommend making it free software that everyone can redistribute and change. You can do so by permitting redistribution under these terms (or, alternatively, under the terms of the ordinary General Public License).

To apply these terms, attach the following notices to the library. It is safest to attach them to the start of each source file to most effectively convey the exclusion of warranty; and each file should have at least the "copyright" line and a pointer to where the full notice is found. one line to give the library's name and an idea of what it does.

Copyright (C) year name of author

This library is free software; you can redistribute it and/or modify it under the terms of the GNU Lesser General Public License as published by the Free Software Foundation; either version 2.1 of the License, or (at your option) any later version.

This library is distributed in the hope that it will be useful, but WITHOUT ANY WARRANTY; without even the implied warranty of MERCHANTABILITY or FITNESS FOR A PARTICULAR PURPOSE. See the GNU Lesser General Public License for more details.

You should have received a copy of the GNU Lesser General Public License along with this library; if not, write to the Free Software Foundation, Inc., 51 Franklin Street, Fifth Floor, Boston, MA 02110-1301 USA Also add information on how to contact you by electronic and paper mail.

You should also get your employer (if you work as a programmer) or your school, if any, to sign a "copyright disclaimer" for the library, if necessary. Here is a sample; alter the names:

Yoyodyne, Inc., hereby disclaims all copyright interest in the library 'Frob' (a library for tweaking knobs) written by James Random Hacker.
signature of Ty Coon, 1 April 1990 Ty Coon, President of Vice.

OpenSSL LICENSE

Copyright (c) 1998-2006 The OpenSSL Project. All rights reserved. Redistribution and use in source and binary forms, with or without modification, are permitted provided that the following conditions are met:

1. Redistributions of source code must retain the above copyright notice, this list of conditions and the following disclaimer.
2. Redistributions in binary form must reproduce the above copyright notice, this list of conditions and the following disclaimer in the documentation and/or other materials provided with the distribution.
3. All advertising materials mentioning features or use of this software must display the following acknowledgment: "This product includes software developed by the OpenSSL Project for use in the OpenSSL Toolkit. (<http://www.openssl.org/>)"
4. The names "OpenSSL Toolkit" and "OpenSSL Project" must not be used to endorse or promote products derived from this software without prior written permission. For written permission, please contact openssl-core@openssl.org.
5. Products derived from this software may not be called "OpenSSL." nor may "OpenSSL." appear in their names without prior written permission of the OpenSSL Project.
6. Redistributions of any form whatsoever must retain the following acknowledgment: "This product includes software developed by the OpenSSL Project for use in the OpenSSL Toolkit (<http://www.openssl.org/>)"

THIS SOFTWARE IS PROVIDED BY THE OpenSSL PROJECT "AS IS" AND ANY EXPRESSED OR IMPLIED WARRANTIES, INCLUDING, BUT NOT LIMITED TO, THE IMPLIED WARRANTIES OF MERCHANTABILITY AND FITNESS FOR A PARTICULAR PURPOSE ARE DISCLAIMED. IN NO EVENT SHALL THE OpenSSL PROJECT OR ITS CONTRIBUTORS BE LIABLE FOR ANY DIRECT, INDIRECT, INCIDENTAL, SPECIAL,

EXEMPLARY, OR CONSEQUENTIAL DAMAGES (INCLUDING, BUT NOT LIMITED TO, PROCUREMENT OF SUBSTITUTE GOODS OR SERVICES; LOSS OF USE, DATA, OR PROFITS; OR BUSINESS INTERRUPTION) HOWEVER CAUSED AND ON ANY THEORY OF LIABILITY, WHETHER IN CONTRACT, STRICT LIABILITY, OR TORT (INCLUDING NEGLIGENCE OR OTHERWISE) ARISING IN ANY WAY OUT OF THE USE OF THIS SOFTWARE, EVEN IF ADVISED OF THE POSSIBILITY OF SUCH DAMAGE. This product includes cryptographic software written by Eric Young (ey@cryptsoft.com). This product includes software written by Tim Hudson (tjh@cryptsoft.com).

Original SSLeay License

Copyright (C) 1995-1998 Eric Young (ey@cryptsoft.com) All rights reserved. This package is an SSL implementation written by Eric Young (ey@cryptsoft.com). The implementation was written so as to conform with Netscapes SSL. This library is free for commercial and non-commercial use as long as the following conditions are adhered to. The following conditions apply to all code found in this distribution, be it the RC4, RSA, lhash, DES, etc., code; not just the SSL code. The SSL documentation included with this distribution is covered by the same copyright terms except that the holder is Tim Hudson (tjh@cryptsoft.com).

Copyright remains Eric Young's, and as such any Copyright notices in the code are not to be removed. If this package is used in a product, Eric Young should be given attribution as the author of the parts of the library used. This can be in the form of a textual message at program startup or in documentation (online or textual) provided with the package. Redistribution and use in source and binary forms, with or without modification, are permitted provided that the following conditions are met:

1. Redistributions of source code must retain the copyright notice, this list of conditions and the following disclaimer.
2. Redistributions in binary form must reproduce the above copyright notice, this list of conditions and the following disclaimer in the documentation and/or other materials provided with the distribution.
3. All advertising materials mentioning features or use of this software must display the following acknowledgement: "This product includes cryptographic software written by Eric Young (ey@cryptsoft.com)" The word 'cryptographic' can be left out if the rouines from the library being used are not cryptographic related :-).
4. If you include any Windows specific code (or a derivative thereof) from the apps directory (application code) you must include an acknowledgement: "This product includes software written by Tim Hudson (tjh@cryptsoft.com)"

THIS SOFTWARE IS PROVIDED BY ERIC YOUNG "AS IS" AND ANY EXPRESS OR IMPLIED WARRANTIES, INCLUDING, BUT NOT LIMITED TO, THE IMPLIED WARRANTIES OF MERCHANTABILITY AND FITNESS FOR A PARTICULAR PURPOSE ARE DISCLAIMED. IN NO EVENT SHALL THE AUTHOR OR CONTRIBUTORS BE LIABLE FOR ANY DIRECT, INDIRECT, INCIDENTAL, SPECIAL, EXEMPLARY, OR CONSEQUENTIAL DAMAGES (INCLUDING, BUT NOT LIMITED TO, PROCUREMENT OF SUBSTITUTE GOODS OR SERVICES; LOSS OF USE, DATA, OR PROFITS; OR BUSINESS INTERRUPTION) HOWEVER CAUSED AND ON ANY THEORY OF LIABILITY, WHETHER IN CONTRACT, STRICT LIABILITY, OR TORT (INCLUDING NEGLIGENCE OR OTHERWISE) ARISING IN ANY WAY OUT OF THE USE OF THIS SOFTWARE, EVEN IF ADVISED OF THE POSSIBILITY OF SUCH DAMAGE. The licence and distribution terms for any publically available version or derivative of this code cannot be changed. i.e. this code cannot simply be copied and put under another distribution licence [including the GNU Public Licence.

